

# Technical Manual

# Matramatic

Rotary Tape Edge Machine  
Mark IV  
RTE-4

MATPARTS

Nov. 2000

**Mattress Production Technology Group Ltd**

Meadows Mill, Burnley Road, Bacup

Lancashire OL13 8DB, England

Tel +44 (0)1706 878558

Fax +44 (0)1706 878288

18/04

TITLE: SPARE PARTS FOR 2 YEARS - MK4

PARTS LIST: 32272

MACHINE TYPE      ASSY DRG      QTY  
 RTE  
 FROM P/C NO 645  
 ONWARDS

NO OF SHEETS: 1

ISSUE NO: 2

PART NO	QTY	DESCRIPTION	REMARKS
LB1	1	SPIDER COUPLING INNER (RUBBER)	
32216	4	VEE PULLEY DIA 3.5 MOD	INCLUDE HA1 BUSH
32057	2	DRIVE WHEEL	
EF3	2	DIA 5/16 * 93"LG ROUND BELT	
EE20	1	SPZ 1470 DRIVE BELT	
EE22	1	SPZ 870 DRIVE BELT	
	1	SPARE BINDER OF EACH TYPE REQUIRED BY CUSTOMER	
32096	2	FEED DOG	
S201	100	NEEDLES 62 * 59 - 22	
32129	2	LIFTING PRESSURE FOOT	
S222	1	VIBRATING PRESSURE BAR	
S223	1	LIFTING PRESSURE BAR	
S902	1	NEEDLE BAR	
32148	1	VIBRATING PRESSER FOOT	MOD TO S710
S226	3	LOOPER	
S903	1	LIFTING PRESSURE GUIDE BLOCK	
S904	2	LIFTING PRESSURE FOOT PINCH SCREW	
S905	2	FOOT LIFTER ARM PINCH SCREW	
S906	2	FOOT LIFTER ARM SET SCREW	
S231	2	LIFTING LINK HINGE PIN SET SCREW	
S907	2	LIFTING CRANK PINCH SCREW	
S233	2	FOOT LIFTER HINGE SCREW	
S908	2	FACE PLATE HINGE SET SCREW	
S909	4	NEEDLE SET SCREW	
S910	2	LOOPER CARRIER CRANK CLAMP NUT	
S911	2	LOOPER CARRIER CRANK CLAMP SCREW	
S238	2	NEEDLE GUARD SCREW	
S239	2	NEEDLE GUARD SCREW	
S912	2	LOOPER HOLDING SCREW	
S913	2	BED PLATE SCREW	
S914	2	LIFTING PRESSURE BAR GUIDE B1 SCREW	
S915	2	LIFTING PRESSURE BAR GUIDE B1 SCREW	
AB326	2	M4 * 8 LG SHCS (LFF SCREW)	
32122	2	SPREADER	

ISSUED BY: JDF

DATE: 15/1/67

PARTS LIST: 32272

MOD NO: 1

ISSUE NO: 2

NO OF SHEETS: 1

TITLE: RTE MK4 GENERAL ASSEMBLY

PARTS LIST: 32301

MACHINE TYPE ASSY DRG QTY  
RTE MK4

NO OF SHEETS: 1

ISSUE NO: 1

PART NO	QTY	DESCRIPTION	REMARKS
32001	1	SET OF MACHINE GUARDS	
32005	1	DRIVE ASSEMBLY	
32055	1	TABLE AND PEDESTAL ASSEMBLY	
32117	1	PNEUMATIC CIRCUIT	
32290	1	RTE SEWING HEAD (CONV OF SINGER 300U194)	-
32246	1	TOOL KIT	*
32247	1	RTE TRANSIT ASSEMBLY	*
		***** OPTIONAL ACCESSORY *****	
32275	1	JUMBO TAPE ATTACHMENT (COMPLETE)	
		2 YEARS SPARES SEE PARTS LIST 32272	

ISSUED BY: JDF

DATE: 20/9/86

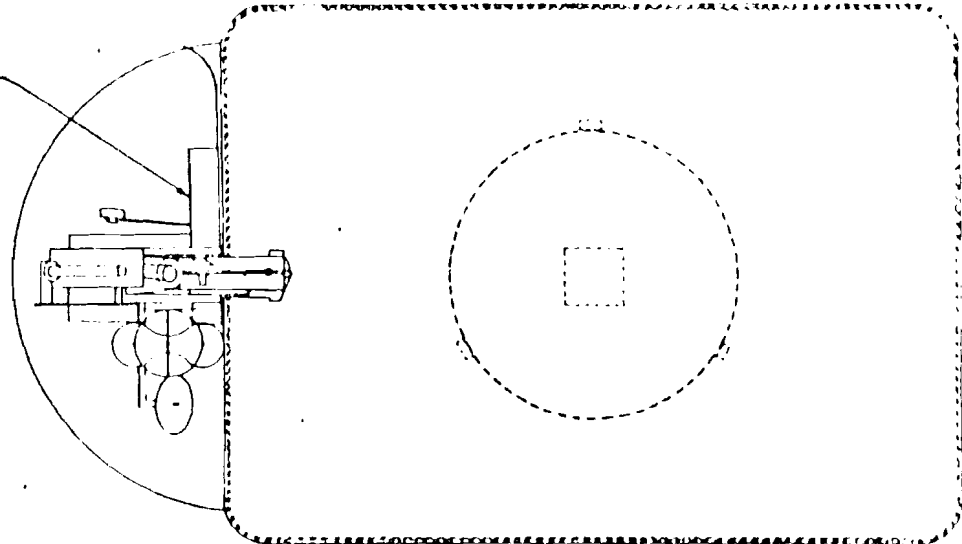
PARTS LIST: 32301

MOD NO:

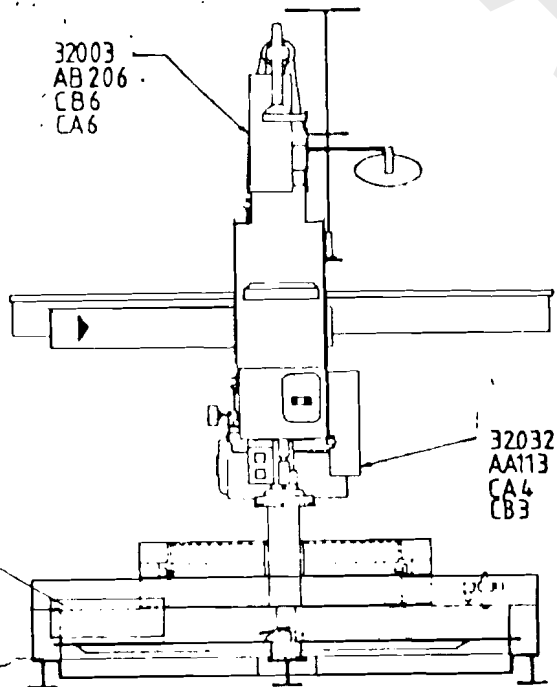
ISSUE NO: 1

NO OF SHEETS: 1

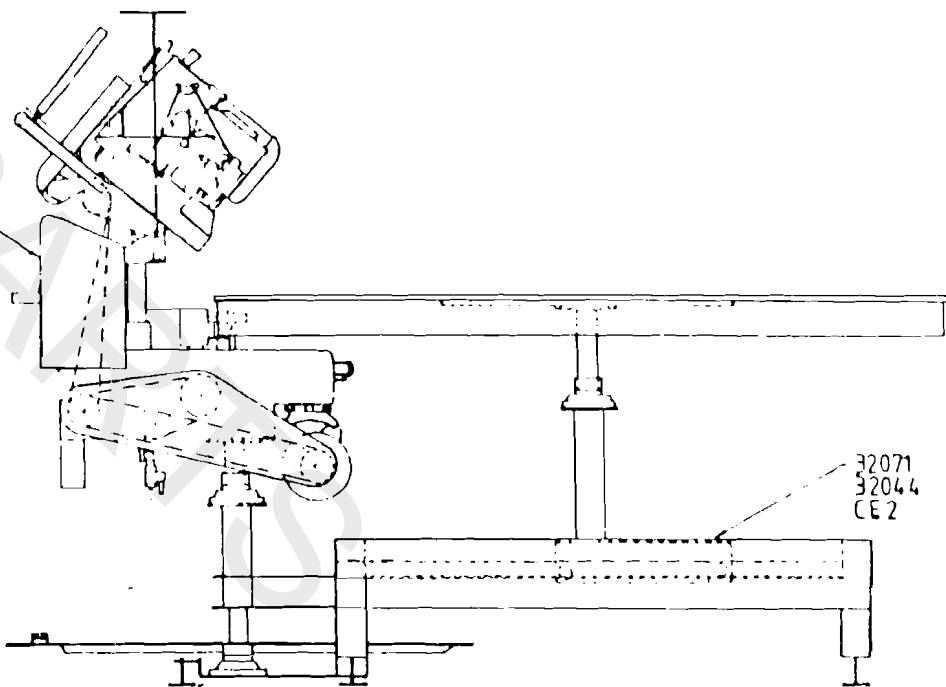
32004  
 32113  
 AA116  
 AB101  
 BA100  
 BA102  
 CA2  
 CA4  
 CB1  
 CB3



32003  
 AB206  
 CB6  
 CA6



32002  
 32009  
 32120  
 AB104  
 AB206  
 CA6  
 CB6  
 CE2



32071  
 32044  
 CE2

32107  
 AB201  
 CA6

1 SET of MACHINE GUARDS

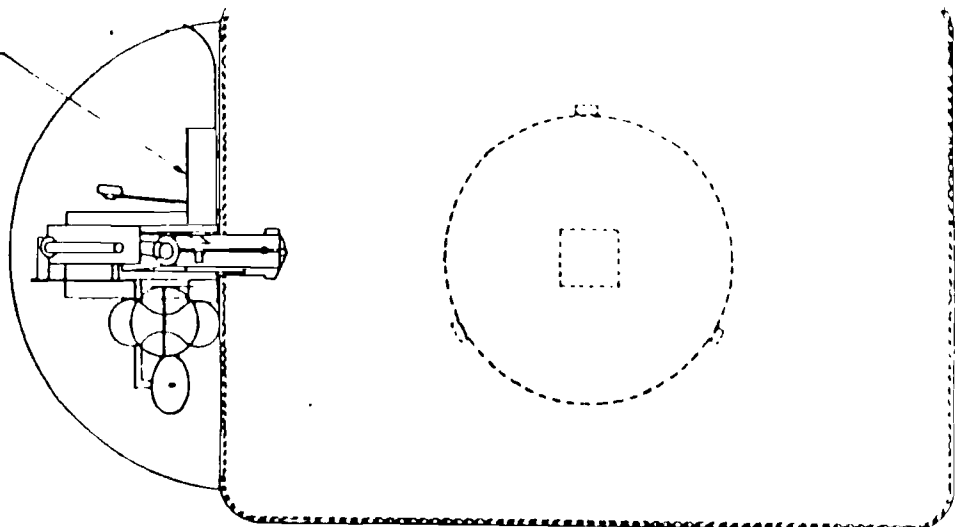
SCALE - 1:10

ASSEMBLY NO 32000

32001

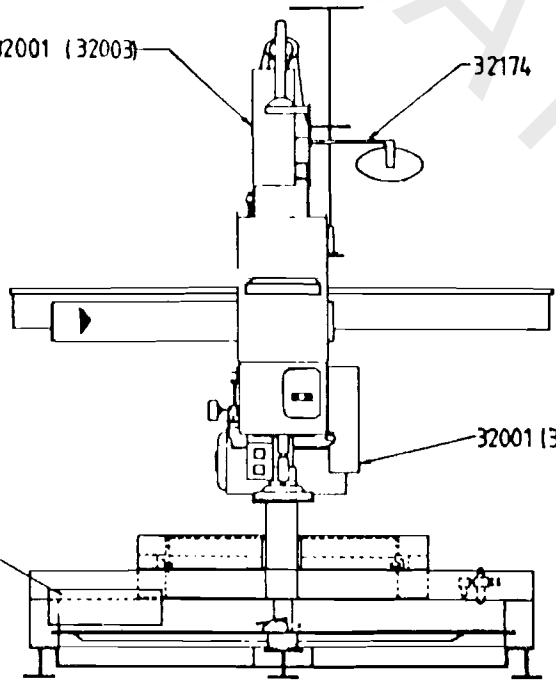
PNEUMATIC CIRCUIT ASSY 32117  
REMOVED FOR CLARITY

32001 (32004)



32001 (32003)

32174



32001 (32107)

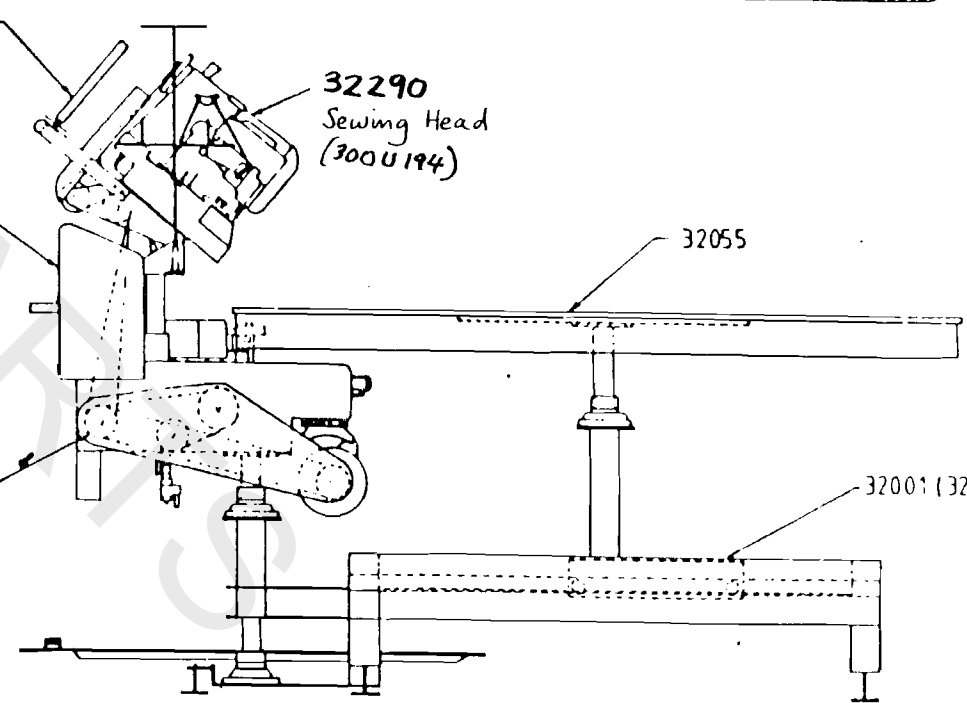
32001 (32002)

32005

32087

32290  
Sewing Head  
(300U194)

32055



32001 (32021)

GENERAL ASSEMBLY OF ROTARY TAPE EDGE MACHINE. MK 4

TITLE: MACHINE GUARDS

PARTS LIST: 32001

MACHINE TYPE	ASSY DRG	QTY
RTE MK3/4	32000/1	1
RTE MK2	32000	1

NO OF SHEETS: 1

ISSUE NO: 4

PART NO	QTY	DESCRIPTION	REMARKS
32003	1	MACHINE BELT COVER	
AF1	2	1/4 WHIT *1/2 LG BUTTON HD SCREW	
CB3	2	1/4 SPRING WASHER	
CA4	2	1/4 WASHER	
32032	1	MAIN DRIVE COVER	
AA115	2	1/4 WHIT * 5/8LG HEX HD SCREW	
CA4	2	1/4 WASHER	
CB3	2	1/4 SPRING WASHER	
32002	1	BACK COVER	
AF1	4	1/4 WHIT *1/2LG ROUND HD SCREW	
CA4	4	1/4 WASHER	
CB3	4	1/4 SPRING WASHER	
32009	1	PIN TRAY	
AF201	2	M5 * 12LG BUTTON HD SCREW	
CA206	2	M5 WASHER	
CB106	2	M5 SPRING WASHER	
BA305	2	M5 NUT	
32120	1	LABEL	
CE2	4	DIA 1/8 * 1/4LG POP RIVET	
32071	1	PEDESTAL COVER	
32044	1	MACHINE LABEL-LARGE	
CE2	6	DIA 1/8 * 1/4LG POP RIVET	
32107	1	TOE GUARD	
AF201	3	M5 * 12LG BUTTON HD SCREW	
CA206	3	M5 WASHER	
32004	1	LEG REST	
32113	1	RUBBER TYRED GUIDE WHEEL	
AB101	1	3/8 WHIT * 2LG SHCS	
CA2	1	3/8 WASHER	
CB1	1	3/8 SPRING WASHER	
BA100	1	3/8 WHIT NUT	
AA105	4	1/4 WHIT * 3/4LG HEX HD SCREW	
CA4	4	1/4 WASHER	
CB3	4	1/4 SPRING WASHER	
BA102	4	1/4 WHIT NUT	

ISSUED BY: JDP

DATE: 20/9/86

PARTS LIST: 32001

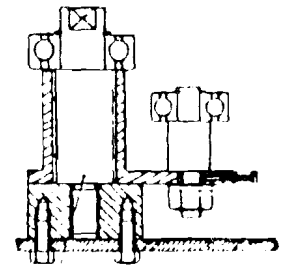
MOD NO:

ISSUE NO: 4

NO OF SHEETS: 1

1225\*CLUTCH MOTOR CONTROL ASSY - ELMOR

32143 SEWING HEAD DRIVE ASSY



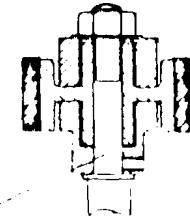
32198 GUIDE WHEEL ASSY

32052 TENSION BRACKET ASSY

12121 DRIVE BOX ASSY

32175 BELT TENSORER PULLEY ASSY

32008 SEWING MA CARRIAGE ASSY



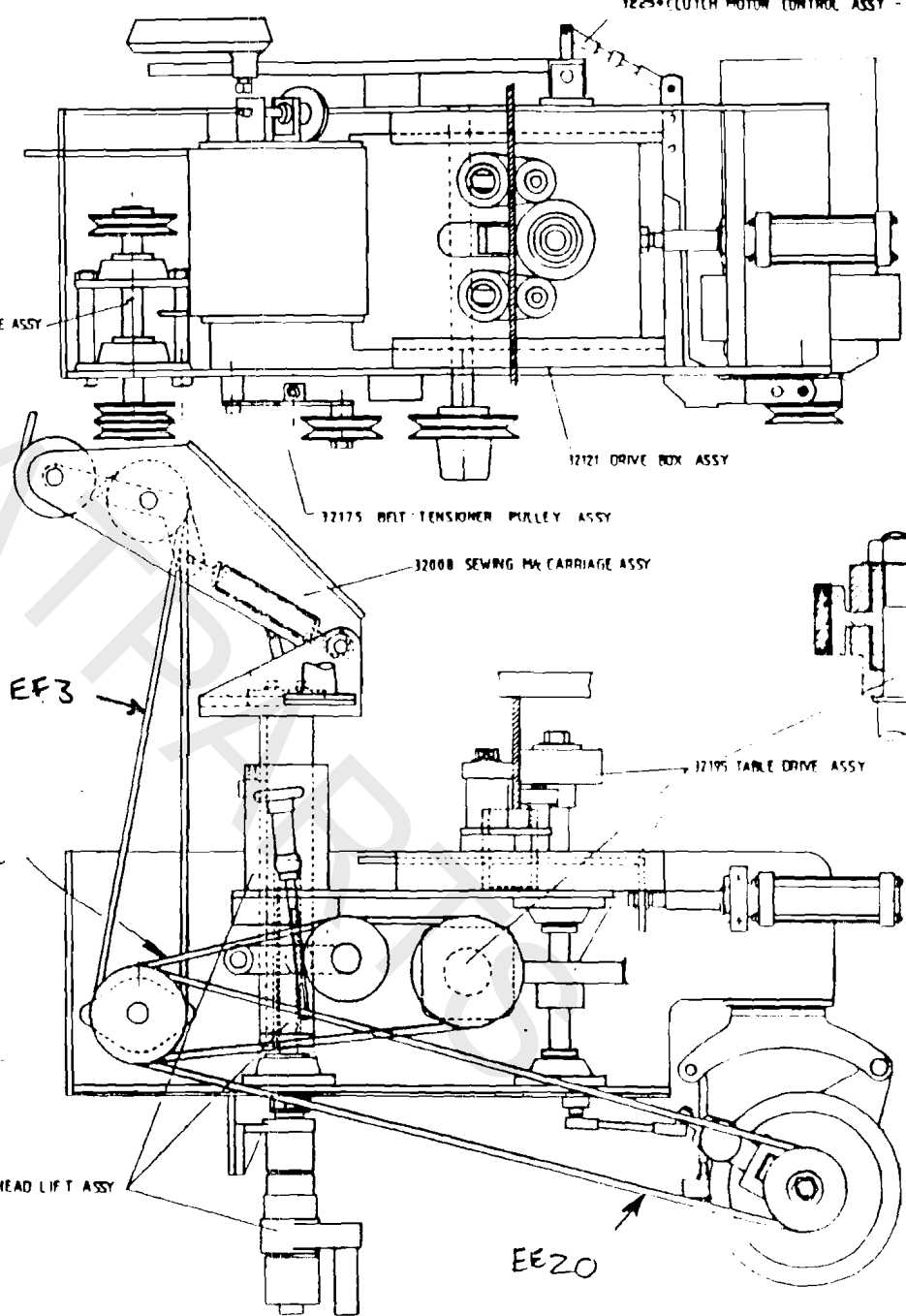
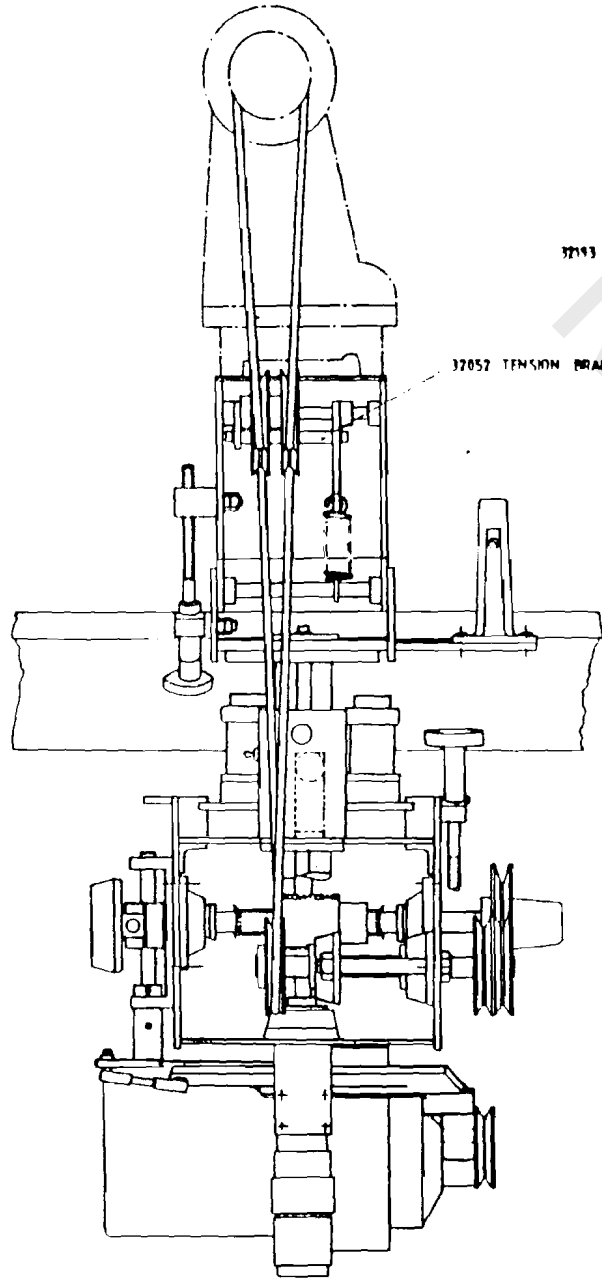
32195 TABLE DRIVE ASSY

EF3

EE22

32194 HEAD LIFT ASSY

EE20



1225*CLUTCH MOTOR CONTROL ASSY - ELMOR	32143 SEWING HEAD DRIVE ASSY	32052 TENSION BRACKET ASSY	12121 DRIVE BOX ASSY	32175 BELT TENSORER PULLEY ASSY	32008 SEWING MA CARRIAGE ASSY	32195 TABLE DRIVE ASSY	32198 GUIDE WHEEL ASSY	32194 HEAD LIFT ASSY
--	------------------------------	----------------------------	----------------------	---------------------------------	-------------------------------	------------------------	------------------------	----------------------

TITLE: DRIVE ASSEMBLY

PARTS LIST: 32005

MACHINE TYPE      ASSY DRG      QTY  
RTE MK3/4          32300/1      1

NO OF SHEETS: 1

ISSUE NO: 7

PART NO	QTY	DESCRIPTION	REMARKS
32008	1	SEWING M/C CARRIAGE ASSY	-
32121	1	DRIVE BOX ASSY	-
32254	1	CLUTCH MOTOR & CONTROL ASSY	ELNOR MOTOR *
32175	1	BELT TENSIONER PULLEY ASSY	-
32193	1	S/HD DRIVE ASSY	
32194	1	HEAD LIFT ASSY	
32195	1	TABLE DRIVE ASSY	
32196	2	GUIDE WHEEL ASSY	
EE20	1	DRIVE BELT VEE SECTION	
EE22	1	DRIVE BELT VEE SECTION	
EF3	1	DRIVE BELT DIA 5/16" * 93"LG	

ISSUED BY: JDF

DATE: 20/9/86

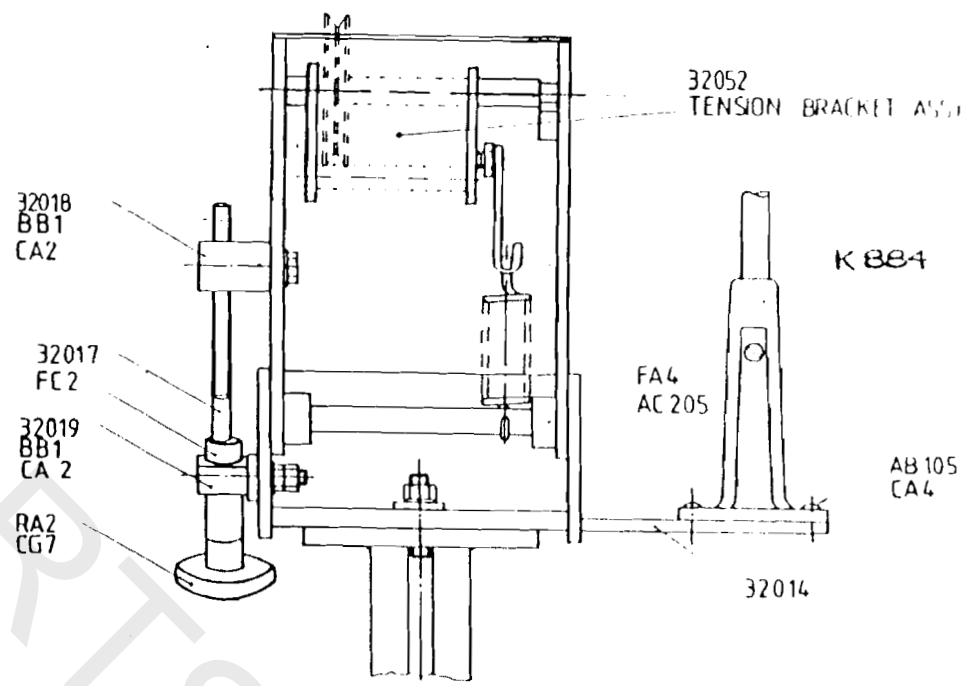
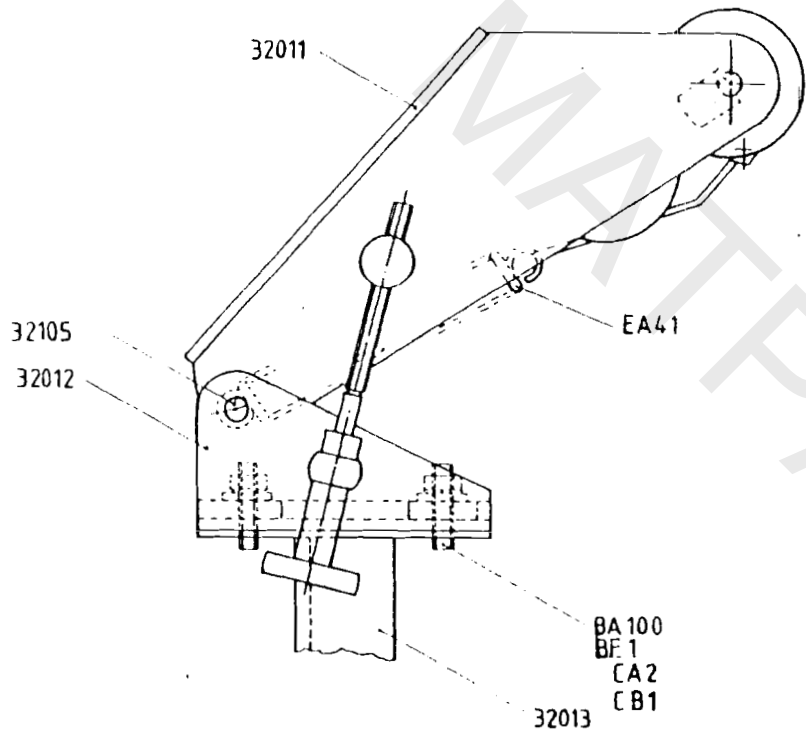
PARTS LIST: 32005

MOD NO:

ISSUE NO: 7

NO OF SHEETS: 1





<table border="1"> <tr> <td>Drawn</td> <td>4</td> </tr> <tr> <td>Checked</td> <td>578</td> </tr> </table>	Drawn	4	Checked	578			LIMITS
Drawn	4						
Checked	578						
SCALE 1:2	MAT	FINISH	UNLESS OTHERWISE STA				
DRAWN GJF	SPEC.	HEAT TREATMENT	ASSY. DRG No. 011				
DATE 23:6 80			32005				
TITLE			DRAWING No.				
SEWING MACHINE CARRIAGE ASSEMBLY			32008				

TITLE: SEWING MACHINE CARRIAGE ASSY

PARTS LIST: 32008

MACHINE TYPE ASSY DRG QTY  
RTE MK1/2/3/4 32005 1

NO OF SHEETS: 1

ISSUE NO: 5

PART NO	QTY	DESCRIPTION	REMARKS
32011	1	SEWING HEAD BRACKET	
32012	1	SLIDE	
32105	1	SEWING HD PIVOT SHAFT	
FA4	2	COLLAR DIA 1/2	
AC205	2	1/4 WHIT * 1/4LG SKT GRUB SCREW	
EA41	1	TENSION SPRING DIA 1 * 6LG	
BF1	2	3/8 WHIT * 1,1/2LG STUD	-
BA100	2	3/8 WHIT NUT	
CA2	2	3/8 WASHER	
CB1	2	SP WASHER DIA 3/8	
K884	1	COTTON STAND ASSY	*
AD11	3	1/4 WHIT * 5/8 LG CSK SCREW	*
32017	1	ADJUSTING SCREW	
32019	1	HEAD TILT-SCREW PIVOT	
FG2	1	DIA 3/8 SPLIT COLLAR	
CA2	1	3/8 WASHER	
BA100	4	3/8 WHIT NUT	
32018	1	HEAD TILT NUT	
CA2	1	3/8 WASHER	
BB1	4	3/8 WHIT LOCKNUT	
RA2	1	PLASTIC HANDNUT	
CG7	1	DIA 1/8 SPRING PIN	
32052	1	TENSION BRACKET ASSY	
KJ7	1	SINGLE CLIP DIA 4 TUBE	
AF201	1	M5 * 12LG BUTTON HD SCREW	
CB106	1	M5 WASHER	

ISSUED BY: JDP

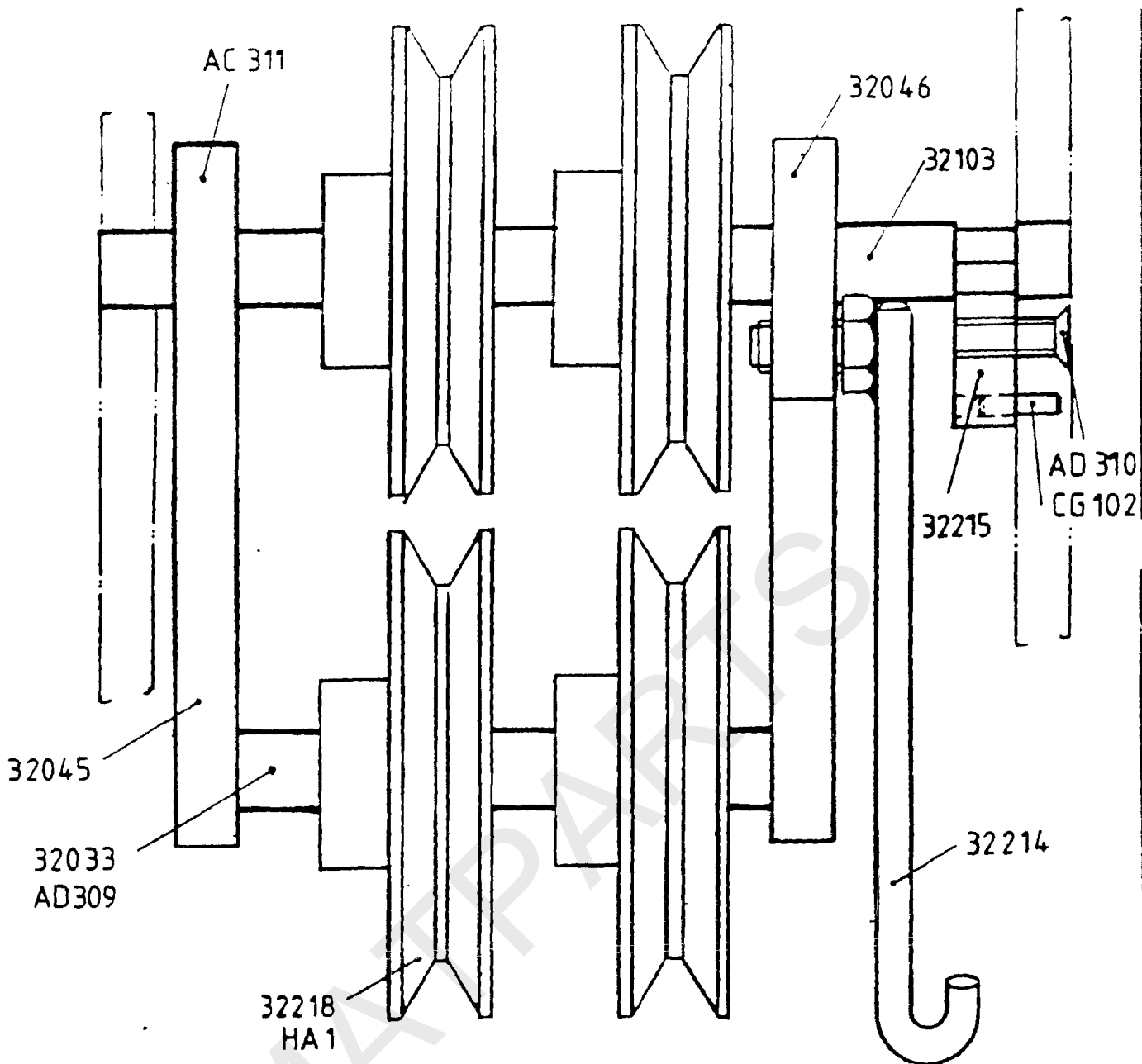
DATE: 20/9/86

PARTS LIST: 32008

MOD NO:

ISSUE NO: 5

NO OF SHEETS: 1



Date	8-81	11-81	12-83
Mod.	0452	331	670
Issue	2	3	4
SCALE	1:1	MAT.	FINISH
DRAWN	GJF	SPEC.	HEAT TREATMENT
DATE	17:7:81		
TITLE		DRAWING No.	
TENSION BRKT ASSY		32052	

LIMITS	
/	
UNLESS OTHERWISE STATED	
ASSY. DRG.	No. OFF
32008	1
DRAWING No.	
32052	

TITLE: TENSION BRACKET ASSEMBLY

PARTS LIST: 32052

MACHINE TYPE ASSY DRG QTY  
RTE MK1/2/3/4 32008 1

NO OF SHEETS: 1

ISSUE NO: 5

PART NO	QTY	DESCRIPTION	REMARKS
32045	1	TENSION BRACKET ARM RIGHT	
32046	1	TENSION BRACKET ARM RIGHT	
32033	1	TENSION BRACKET SHAFT	
AD309	2	M6 * 20LG SHCS	
AC311	2	M6 * 12LG SKT GRUB SCREW	*
			-
32218	4	VEE PULLEY	MOD TO GA11
HA1	4	OILITE BUSH DIA 3/4 * DIA 1/2 * 1LG	
			-
32103	1	TENSION BRACKET PIVOT SHAFT	
32215	1	SHAFT RETAINER	
AD310	1	M6 * 12LG SKT CSK SCREW	
GG102	1	SPRING PIN DIA 3 * 12LG	ALT CG6
32214	1	TENSION LINK	USE PTFE TAPE WHEN FITTING TO 32046 BRACKET

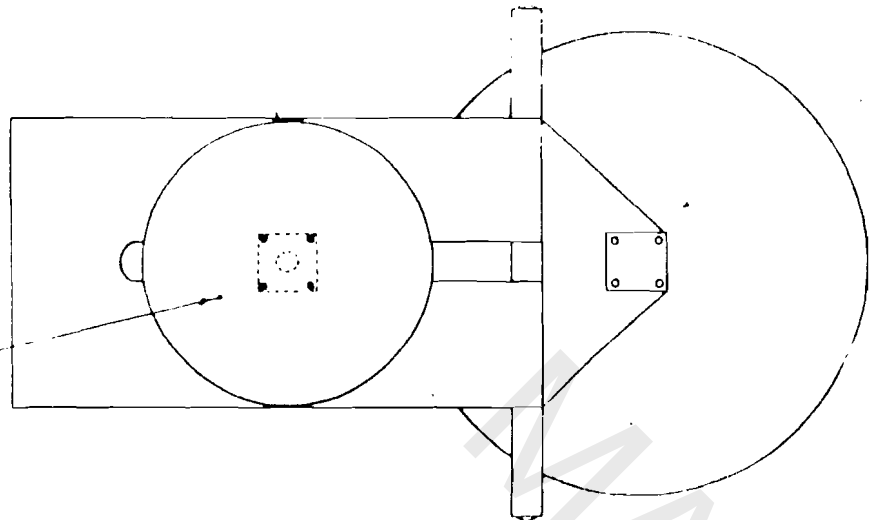
ISSUED BY: JDP DATE: 20/9/863

PARTS LIST: 32052

MOD NO: ISSUE NO: 5

NO OF SHEETS: 1

32079  
AD 10  
BA 100  
CA 2  
CB 1



PLAN VIEW WITH TABLE REMOVED FOR CLARITY

SECTION THROUGH TAPE CARTRIDGE

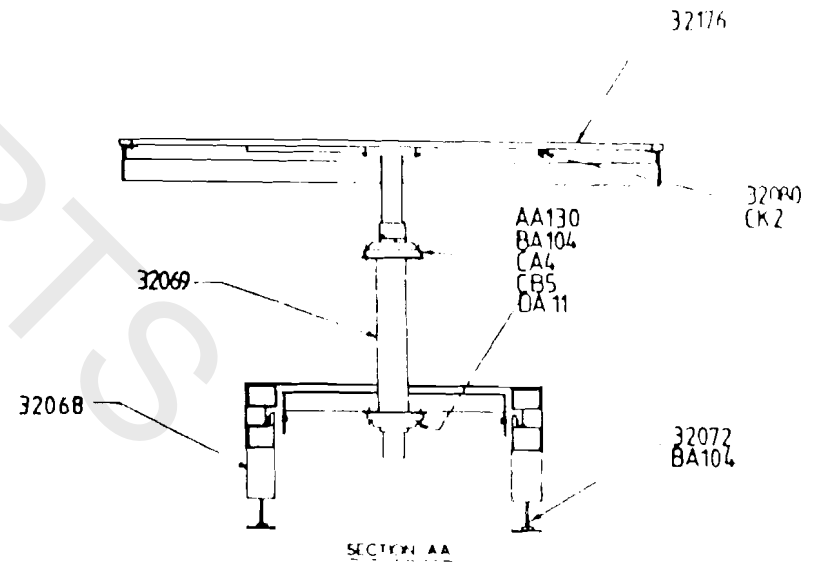
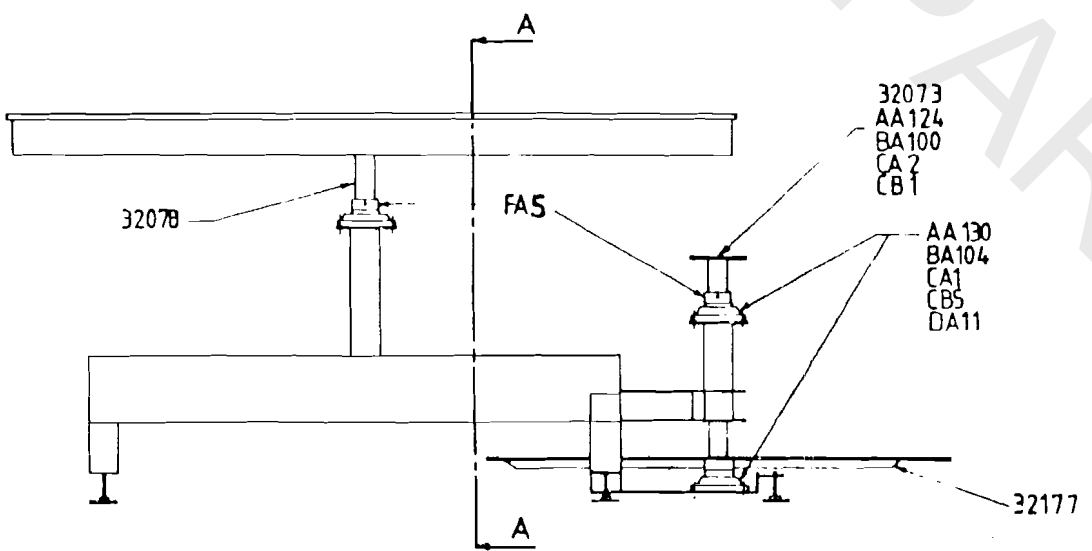
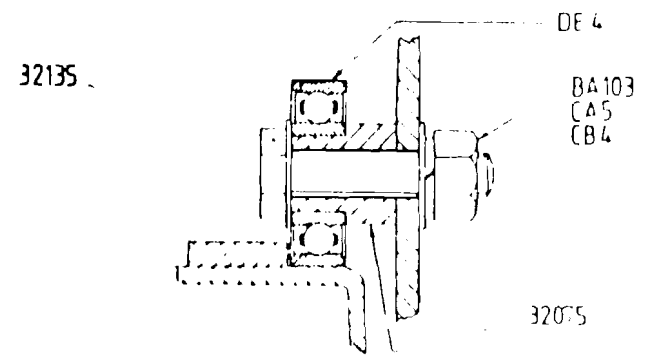


TABLE & PEDESTAL ASSEMBLY  
ROTARY TAPE EDGE  
SCALE 1:10

TITLE: TABLE & PEDESTAL ASSEMBLY

PARTS LIST: 32055

MACHINE TYPE	ASSY DRG	QTY
RTE MK3/4	32300/1	1
RTE MK2	32000	1

NO OF SHEETS: 1

ISSUE NO: 6

PART NO	QTY	DESCRIPTION	REMARKS
32243	1	PEDESTAL ASSEMBLY	*
DA11	1	SQUARE FLANGE JOURNAL BEARING 2 DIA	-
AA130	4	5/8 WHIT * 2LG HEX HD SCREW	-
CA1	8	5/8 WASHER	-
CB5	4	5/8 SPRING WASHER	-
BA104	4	5/8 WHIT NUT	-
DA11	1	SQUARE FLANGE JOURNAL BEARING 2 DIA	-
AA136	4	5/8 WHIT * 1,1/4LG HEX HD SCREW	-
CA1	4	5/8 WASHER	-
CB5	4	5/8 SPRING WASHER	-
32073	1	DRIVE BOX SUPPORT	-
FA5	1	COLLAR 2 DIA	-
AA102	4	3/8 WHIT * 1,1/4LG HEX HD SCREW	-
BA100	4	3/8 WHIT NUT	-
CA2	8	3/8 WASHER	-
CB1	4	3/8 SPRING WASHER	-
32177	1	FOOTPLATE ASSEMBLY	-
32176	1	TABLE ASSEMBLY	-
32080	4	TABLE LOCKING LEVER ASSEMBLY	-
CK2	8	WOODSCREW NO8 * 1,1/4LG	-
32075	4	BEARING SLEEVE	-
AA138	4	1/2 WHIT * 2,1/2LG HEX HD SCREW	-
DE4	4	JOURNAL BEARING 20 DIA	-
CA5	20	1/2 WASHER	-
CB4	4	SPRING WASHER 1/2 DIA	-
BA103	4	1/2 WHIT NUT	-
32069	1	TRAVELLING TABLE CARRIAGE	-
32078	1	TABLE SUPPORT STRUT	-
32079	1	TABLE SUPPORT PAD	-
AD25	4	3/8 WHIT * 1,3/4LG SKT DSK HD SCREW	-
CA2	4	3/8 WASHER	-
CB1	4	3/8 SPRING WASHER	-
BA100	4	3/8 WHIT NUT	-
FA5	1	COLLAR 2 DIA	-
DA11	2	SQUARE FLANGE JOURNAL BEARING 2 DIA	-
AA130	8	5/8 WHIT * 2LG HEX HD SCREW	-
CA1	16	5/8 WASHER	-
CB5	8	5/8 SPRING WASHER	-
BA104	8	5/8 WHIT NUT	-

ISSUED BY: JDP

DATE: 20/9/86

PARTS LIST: 32055

MOD NO:

ISSUE NO: 6

NO OF SHEETS: 1

TITLE: TRAVELLING TABLE CARRIAGE ASSY

PARTS LIST: 32069

MACHINE TYPE      ASSY DRG      QTY  
RTE MK1/2/3/4      32055      1

NO OF SHEETS: 1

ISSUE NO: 2

PART NO	QTY	DESCRIPTION	REMARKS
32151	2	BEARING MTG PLATE	
32152	1	CARRIAGE SUPPORT	
32153	1	TOP PLATE	
32154	2	SIDE PLATE	
32155	3	SUPPORT BAR	

MATPARTS

ISSUED BY: JDP

DATE: 20/9/86

PARTS LIST: 32069

MOD NO:

ISSUE NO: 2

NO OF SHEETS: 1

TITLE: TABLE LOCKING LEVER ASSEMBLY

PARTS LIST: 32080

MACHINE TYPE      ASSY DRG      QTY  
RTE MK1/2/3/4      32055      4

NO OF SHEETS: 1

ISSUE NO: 3

PART NO	QTY	DESCRIPTION	REMARKS
	1	3/16 * 3/4 * SLG ALUMINIUM BKT	
	1	18mm BIRCH PLY 3 * 2,1/16	
GK9	2	WOOD SCREW NO 8 * 1LG	

MATPARTS

ISSUED BY: JDP

DATE: 20/9/86

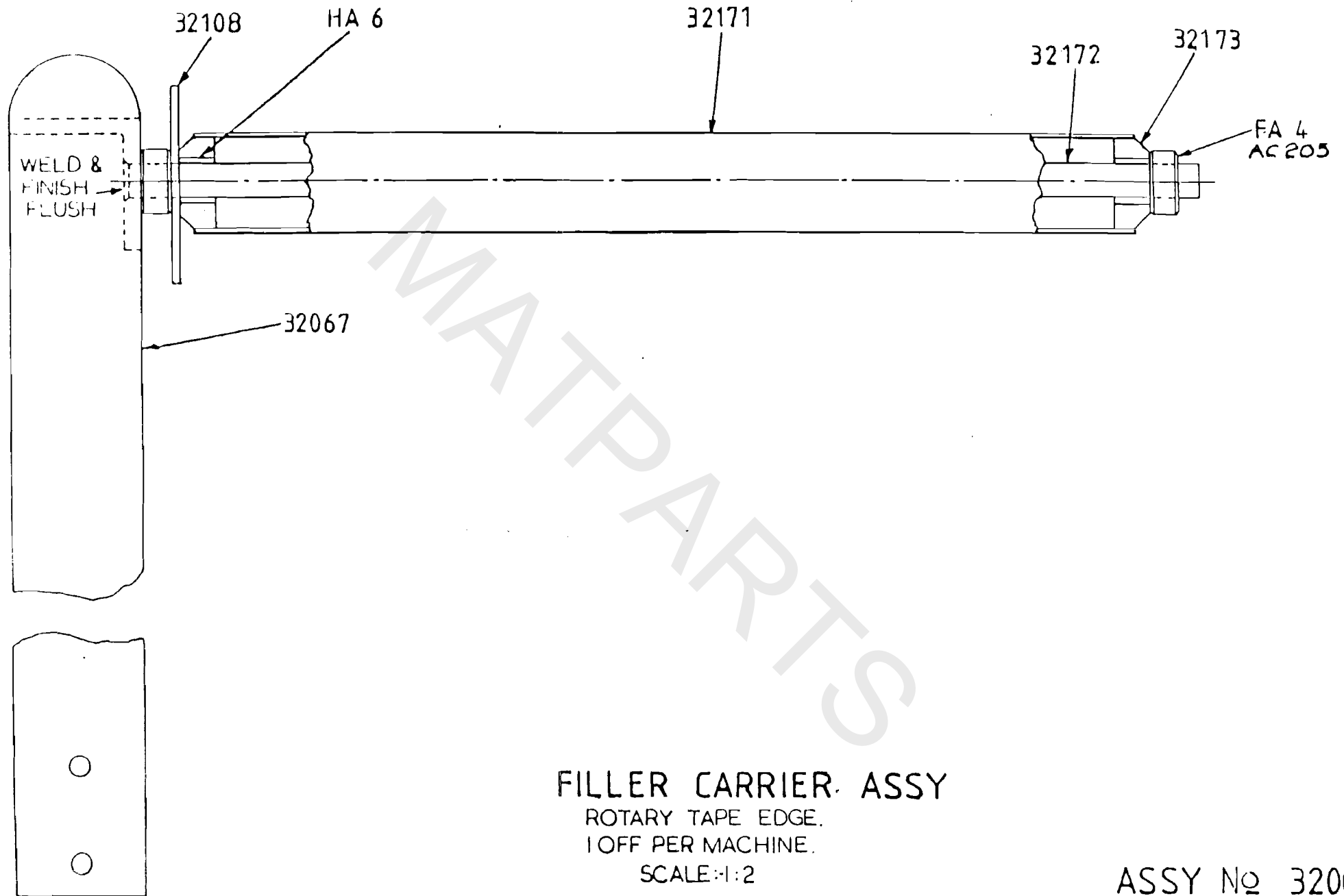
PARTS LIST: 32080

MOD NO:

ISSUE NO: 3

NO OF SHEETS: 1





FILLER CARRIER ASSY

ROTARY TAPE EDGE.

1 OFF PER MACHINE.

SCALE: 1:2

ASSY No 32000

OLD No 456

DRG No 22027

DOWNLOADED BY

TITLE: FILLER CARRIER ASSEMBLY

PARTS LIST: 32087

MACHINE TYPE	ASSY DRG	QTY
RTE MK4	32275	1
RTE MK3	32300	1
RTE MK1/2	32000	1

NO OF SHEETS: 1

ISSUE NO: 5

PART NO	QTY	DESCRIPTION	REMARKS
32067	1	JUMBO FILLER BRACKET	
32172	1	FILLER CARRIER SHAFT	
FA4	1	1/2 DIA COLLAR	
AC205	1	1/4 WHIT * 1/4LG SKT GRUB SCREW	
32108	1	JUMBO FILLER CARRIER DISC	-
32171	1	FILLER CARRIER ROLLER	) ASSEMBLE *
32173	1	FILLER CARRIER ROLLER END	) USING TA1 *
TA1		LOCTITE (TUBE WELD)	*
HA4	2	OILITE BUSH 1/2DIA * 5/8DIA * 3/8LG	*
FA4	1	1/2DIA COLLAR	
AC205	1	1/4 WHIT * 1/4LG SKT GRUB SCREW	

\*\*\*\*\* \*\*\* NOTE THIS ASSEMBLY IS AN OPTIONAL ACCES\*\*\*\*\*

ISSUED BY: JDF

DATE: 20/9/86

PARTS LIST: 32087

MOD NO:

ISSUE NO: 5

NO OF SHEETS: 1

TITLE: OIL PIPE ASSEMBLY

PARTS LIST: 32110

MACHINE TYPE  
RTE MK2/3/4

ASSY DRG QTY  
32121 1

NO OF SHEETS: 1

ISSUE NO: 3

PART NO	QTY	DESCRIPTION	REMARKS
32211	1	LUBRICATOR ADAPTOR	
1338	1	LUBRICATOR	
K026	1	3/16 DIA * 430mm LG COPPER TUBE	
TA1	1	ADHESIVE ("TUBE WELD LOCKTITE")	

MATPARTS

ISSUED BY: JDF

DATE: 20/9/86

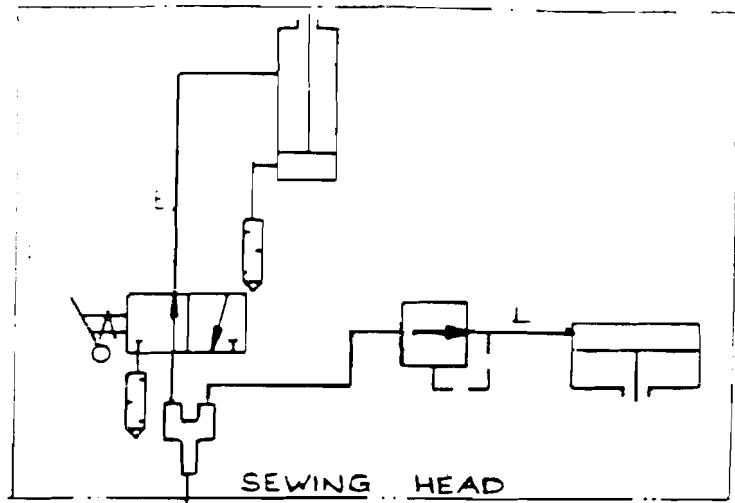
PARTS LIST: 32110

MOD NO:

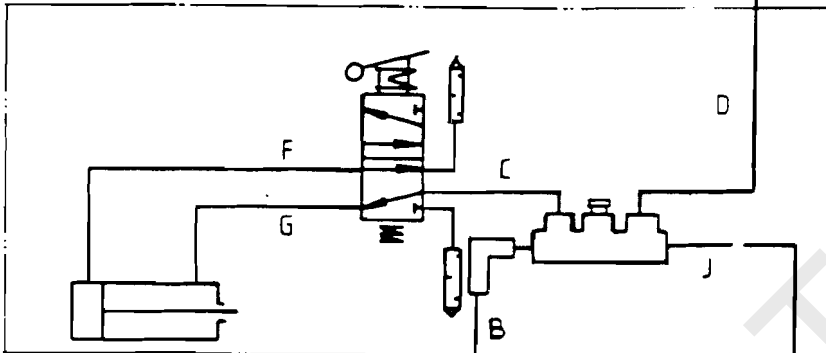
ISSUE NO: 3

NO OF SHEETS: 1

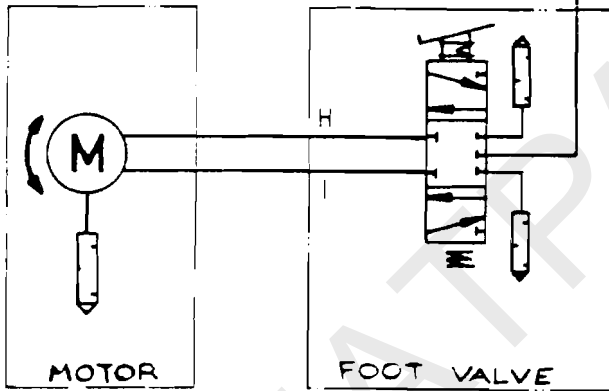
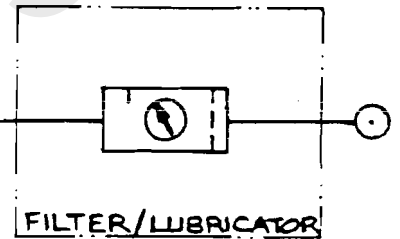
32242  
PRESSER FOOT LIFT ASSY



32121  
DRIVE BOX ASSY



32068  
PEDESTAL  
FABRICATION ASSY.



32177  
FOOT PLATE ASSY.

32194  
HEAD LIFT ASSY.

Date			LIMITS		
6:81			/		
7/83					
1/84					
Mod.			UNLESS OTHERWISE STATED		
Redrawn			ASSY. DRG.		
PNEUMATIC PRESSER FOOT ADDED RT# 213			No. OFF		
695			/		
Issue			HEAT TREATMENT		
3			/		
4			TITLE		
5			PNEUMATIC CIRCUIT DIAGRAM		
SCALE		MAT.		DRAWING No.	
/		/		32117	
DRAWN GJF		SPEC.			
DATE 25:6:81		/			

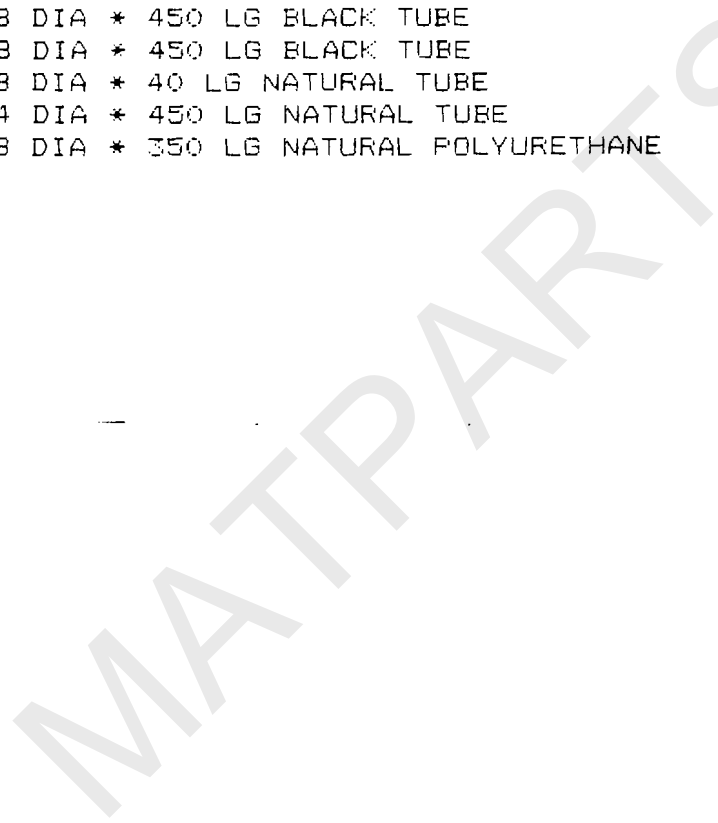
TITLE: PNEUMATIC CIRCUIT

PARTS LIST: 32117

MACHINE TYPE	ASSY DRG	QTY
RTE MK3/4	32300/1	1
RTE MK2	32000	1

NO OF SHEETS: 1  
 ISSUE NO: 5

PART NO	QTY	DESCRIPTION	REMARKS
32117-A	1	8 DIA * 1600 LG NATURAL TUBE	K012
-B	1	8 DIA * 750 LG NATURAL TUBE	K012
-C	1	8 DIA * 200 LG NATURAL TUBE	K012
-D	1	4 DIA * 1250 LG NATURAL TUBE	K010
-E	1	4 DIA * 185 LG RED TUBE	K016
-F	1	4 DIA * 740 LG GREEN TUBE	K024
-G	1	4 DIA * 710 LG GREEN TUBE	K024
-H	1	8 DIA * 450 LG BLACK TUBE	K015
-I	1	8 DIA * 450 LG BLACK TUBE	K015
-J	1	8 DIA * 40 LG NATURAL TUBE	K012
-K	1	4 DIA * 450 LG NATURAL TUBE	K010 *
-L	1	8 DIA * 350 LG NATURAL POLYURETHANE	MUST USE POLY- URETHANE *



ISSUED BY: JDF

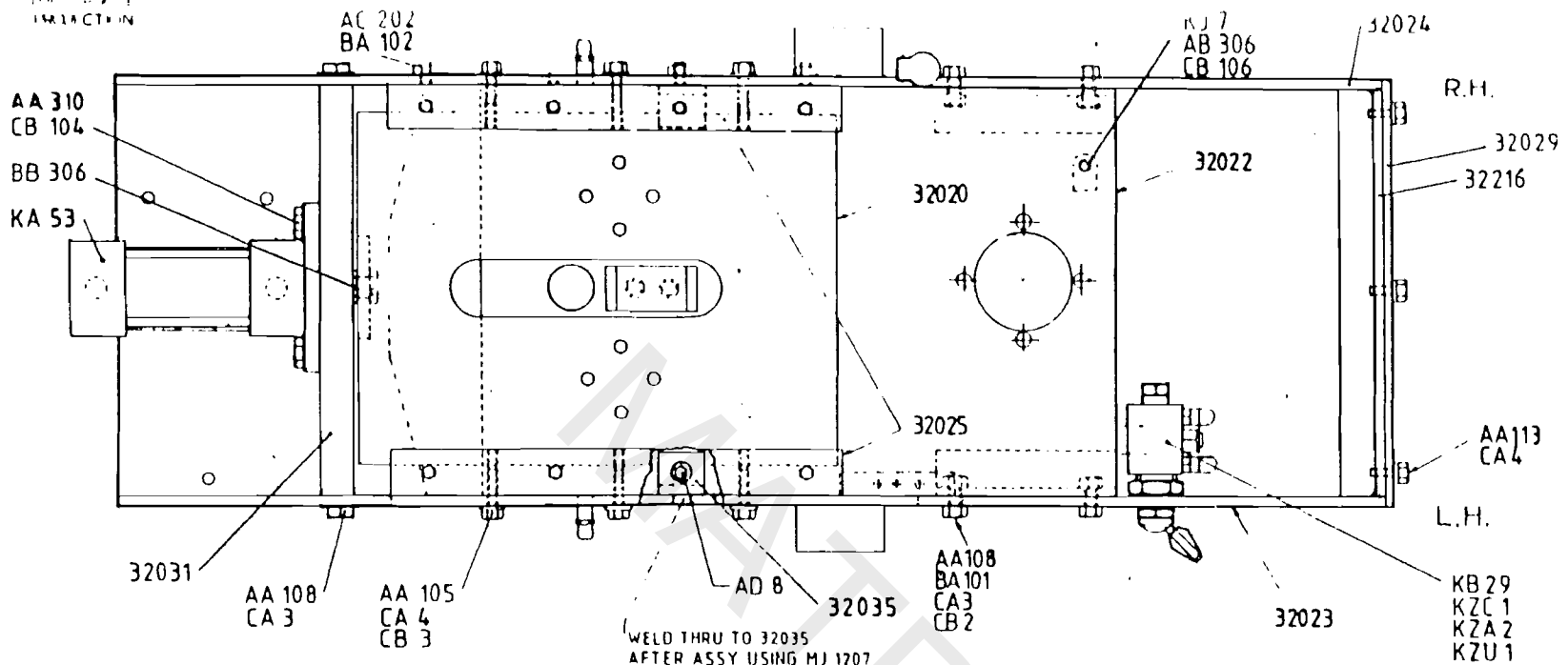
DATE: 20/9/86

PARTS LIST: 32117

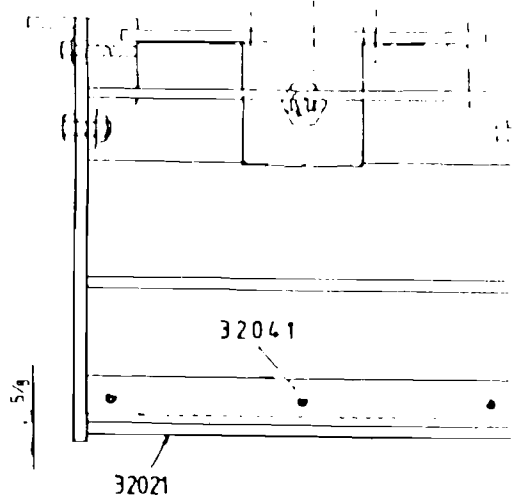
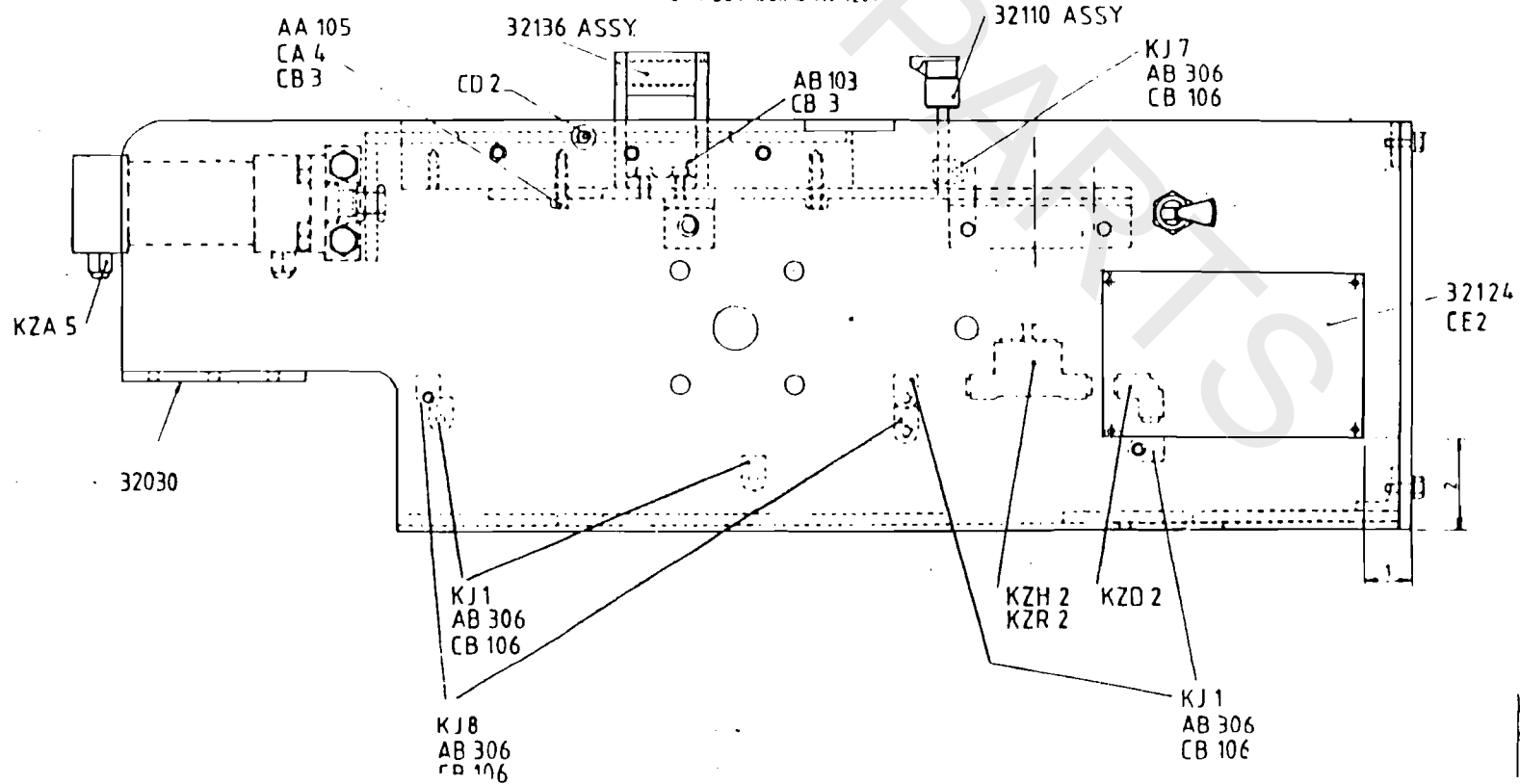
MOD NO:

ISSUE NO: 5

NO OF SHEETS: 1



END VIEW WITH 32029 END PLATE  
& 32216 MOUNTING STRAP REMOVED



ISSUE 5	APPROV 320	
ASSEMBLY	32121	1
DRIVE BOX ASSY		

TITLE: DRIVE BOX ASSEMBLY

PARTS LIST: 32121

MACHINE TYPE ASSY DRG QTY  
RTE MK2/3/4 32005 1

NO OF SHEETS: 2

ISSUE NO: 7

PART NO	QTY	DESCRIPTION	REMARKS
32020	1	SIDE PLATE	-
32021	1	BASE PLATE	-
32022	1	TOP PLATE	-
AA108	4	5/16 WHIT * 1LG HEX HD SCREW	-
BA101	4	5/16 WHIT NUT	-
CA3	4	5/16 WASHER	-
CB2	4	5/16 SPRING WASHER	-
AA105	4	1/4 WHIT * 3/5LG HEX HD SCREW	-
CA4	4	1/4 WASHER	-
CB3	4	1/4 SPRING WASHER	-
32035	2	TOP PLATE MOUNTING ANGLE	-
ADB	2	1/4 WHIT * 1/2LG SHCS	-
32136	1	TABLE SUPPORT ROLLER ASSEMBLY	-
AB104	2	1/4 WHIT * 1/2LG SHCS	-
CB3	2	1/4 SPRING WASHER	-
32023	1	SIDE PLATE -LH	-
32024	1	SIDE PLATE -RH	-
AA105	6	1/4 WHIT * 3/4LG HEX HD SCREW	-
CA4	6	1/4 WASHER	-
CB3	6	1/4 SPRING WASHER	-
AC202	4	1/4 WHIT * 1/2LG SKT SET SCREW	-
BA102	4	1/4 WHIT NUT	-
32025	2	SIDE PLATE CARRIER	-
CD2	2	1/4 BSF GREASE NIPPLE	-
32029	1	END PLATE	-
32216	1	END PLATE MTG STRAP	-
32041	1	END PLATE MTG ANGLE	-
AA115	6	1/4 WHIT * 5/8LG HEX HD SCREW	-
CB3	6	1/4 SPRING WASHER	-
CA4	6	1/4 WASHER	-
32030	1	MOTOR MTG PLATE - JONES/ELNOR	-
32031	1	CYLINDER MTG BRACKET	-
AA108	4	5/16 WHIT * 1LG HEX HD SCREW	-
CA3	4	5/16 WASHER	-
CB2	4	5/16 SPRING WASHER	-
32124	1	MACHINE LABEL	-
CE2	4	1/8 * 1/4LG POP RIVET	-

ISSUED BY: JDF DATE: 20/9/86

PARTS LIST: 32121

MOD NO: ISSUE NO: 7

NO OF SHEETS: 2

TITLE: DRIVE BOX ASSEMBLY

PARTS LIST: 32121-2

MACHINE TYPE ASSY DRG QTY  
RTE MK2/3/4 32005 1

NO OF SHEETS: 2

ISSUE NO: 8

PART NO	QTY	DESCRIPTION	REMARKS
32217	1	SHOULDERED LOCKNUT	MAKE FROM BB306
BB306	1	M12 * 1.25 LOCKNUT	
KAS3	1	CYLINDER 40 DIA * 25 STROKE	FLANGE MTG
AB302	4	M8 * 25LG SHCS	
CB104	4	M8 SPRING WASHER	
			-
KZA5	2	1/4 BSP TO 4 DIA MALE STUD ADAPTOR	
KJ8	2	DOUBLE CLIP 4 DIA	FIT TO 32023
AB306	2	M5 * 8LG SHCS	
CB106	2	M5 SPRING WASHER	
KZH2	1	MULTIPLE TEE 8 DIA - 4 DIA	
KZR2	1	PLUG 4 DIA TUBE	
KZD2	1	ELBOW 8 DIA TUBE	
KJ10	2	SINGLE CLIP 8 DIA TUBE	FIT TO 32023
AB306	2	M5 * 8LG SHCS	
CB106	2	M5 SPRING WASHER	
			-
KJ10	2	SINGLE CLIP 8 DIA TUBE	FIT TO 32024
AB306	2	M5 * 8LG SHCS	
CB106	2	M5 SPRING WASHER	
			-
KJ7	1	SINGLE CLIP 4 DIA TUBE	FIT TO 32022
AB306	1	M5 * 8LG SHCS	
CB106	1	M5 SPRING WASHER	
			-
32110	1	OIL PIPE ASSEMBLY	FIT TO 32024
KJ7	1	SINGLE CLIP 4 DIA TUBE	
AB306	1	M5 * 8LG SHCS	
CB106	1	M5 SPRING WASHER	
			-
KB29	1	VALVE, TOGGLE ACTUATOR	FIT TO 32023
KZC1	3	1/8 BSP TO 4 DIA TUBE ELBOW	
KZU1	2	1/8 BSP MUFFLER	

ISSUED BY: JDF

DATE: 20/9/864

PARTS LIST: 32121-2

MOD NO:

ISSUE NO: 8

NO OF SHEETS: 2



TITLE: TABLE SUPPORT ROLLER ASSEMBLY

FARTS LIST: 32136

MACHINE TYPE      ASSY DRG      QTY  
RTE MK1/2/3/4      32121      1

NO OF SHEETS: 1

ISSUE NO: 3

PART NO	QTY	DESCRIPTION	REMARKS
32027	1	TABLE SUPPORT ROLLER	
32028	1	TABLE SUPPORT ROLLER BRACKET	
32137	1	TABLE SUPPORT ROLLER SHAFT	
AG101	1	2BA * 3/8LG SKT GRUB SCREW	
HA10	1	QILITE BUSH 1/2DIA * 5/8 DIA * 1,1/2LG	



ISSUED BY: JDF

DATE: 20/9/86

FARTS LIST: 32136

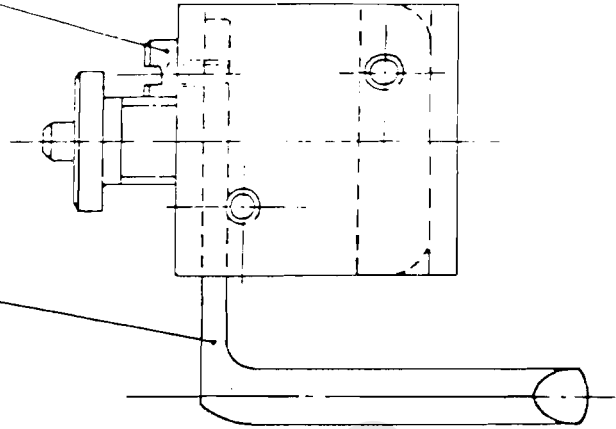
MOD NO:

ISSUE NO: 3

NO OF SHEETS: 1

AE 109

32143



EB 8

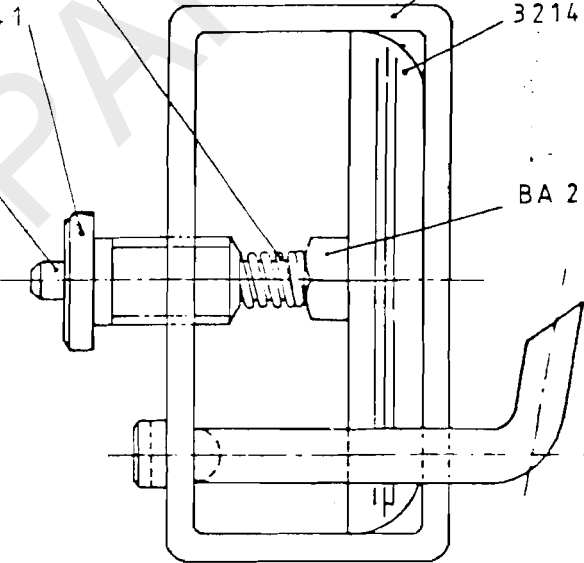
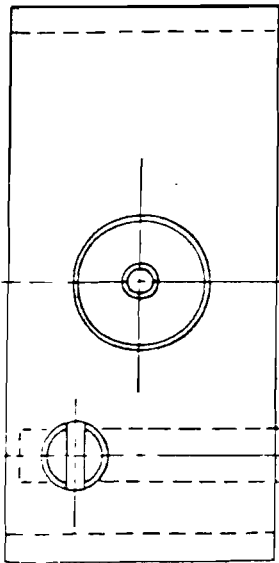
32141

32142

32145

32144

BA 203



Date				LIMITS	
Mod.					
Issue				UNLESS OTHERWISE STATED	
SCALE 2:1	MAT	FINISH		ASSY. DRG	No OFF
DRAWN SDG	SPEC	PEAL TREATMENT		3214	1
DATE JAN 77					
			TITLE	DRAWING NO.	
			TAPE TENSIONER ASSY	(OLD NO 785)	
				32140	

TITLE: TAPE TENSIONER ASSEMBLY

PARTS LIST: 32140

MACHINE TYPE	ASSY DRG	QTY
RTE MK3/4	32250	1
RTE MK1/2	32147	1

NO OF SHEETS: 1

ISSUE NO: 5

PART NO	QTY	DESCRIPTION	REMARKS
32145	1	TAPE TENSIONER - FRAME	
32144	1	TAPE TENSIONER - PRESSURE PLATE	
32142	1	TAPE TENSIONER STUD	
EB8	1	SPRING	
BA203	1	4BA NUT	
32141	1	TAPE TENSIONER - STUD NUT	
32143	1	TAPE TENSIONER - TAPE GUIDE	
AE109	1	4BA * 1/4LG CHEESE HD SCREW	3/16LG ROD

MATPARTS

ISSUED BY: JDF


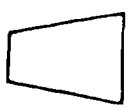
DATE: 20/9/86

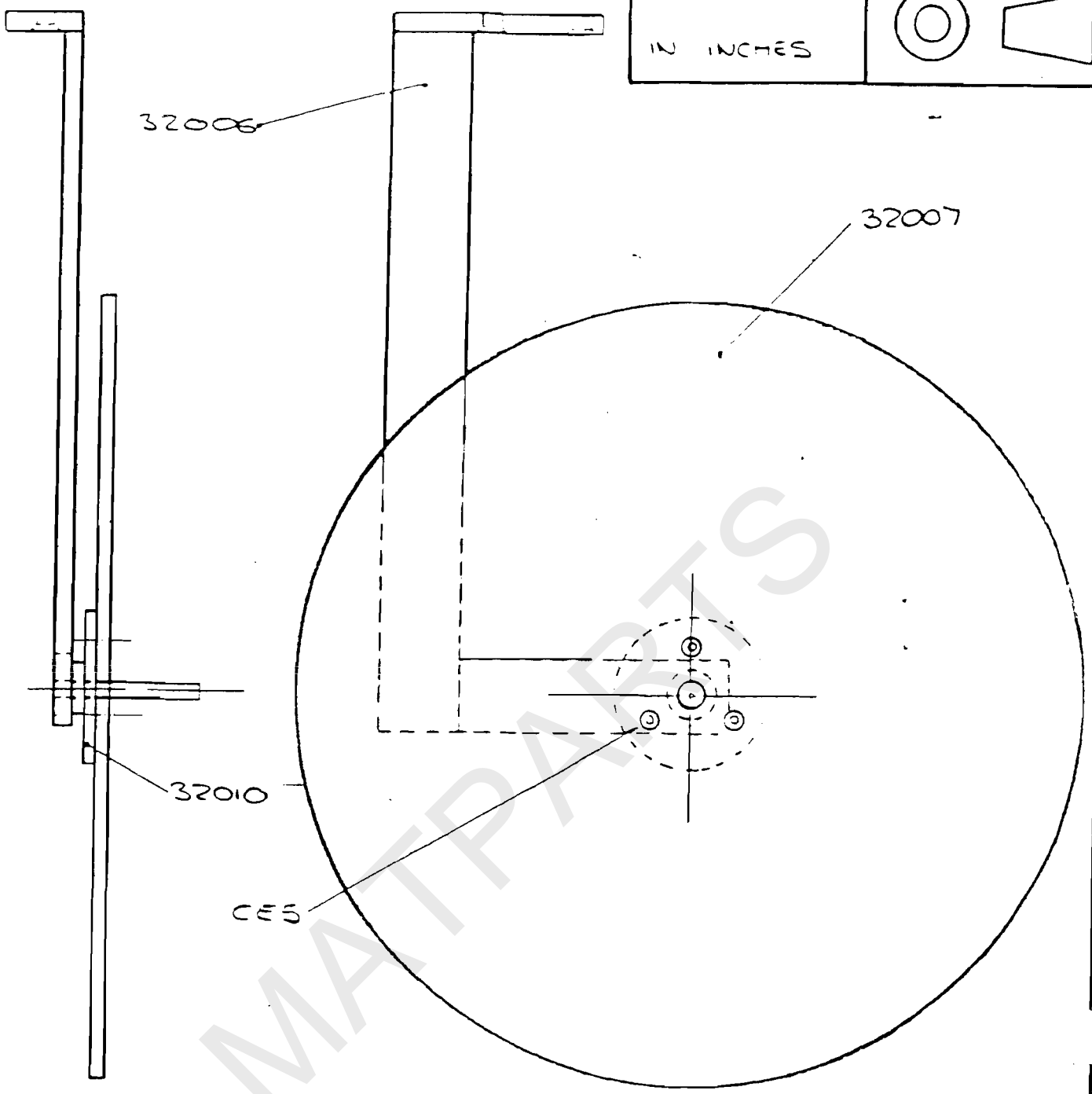
PARTS LIST: 32140

MOD NO:

ISSUE NO: 5

NO OF SHEETS: 1

DIMENSIONS IN INCHES		
-------------------------	--	--



Date				LIMITS	
Mod.					
Issue					
SCALE 1:2	MAT.	FINISH	UNLESS OTHERWISE STATED		
DRAWN CJE	SPEC.	HEAT TREATMENT	ASSY. DRG.	No. OFF	
DATE 21:3:80			32000	1	
TITLE TAPE REEL ASSY			DRAWING No. 32174		

TITLE: TAPE REEL ASSEMBLY

PARTS LIST: 32174

MACHINE TYPE	ASSY DRG	QTY
RTE MK3/4	32250	1
RTE MK1/2	32000	1

NO OF SHEETS: 1

ISSUE NO: 5

PART NO	QTY	DESCRIPTION	REMARKS
32006	1	TAPE REEL BRACKET	FIT ASSY TO KANSAI HEAD USING SCREWS SUPPLIED WITH HEAD
32007	1	TAPE REEL DISC	
32010	1	PIVOT	
CE5	3	3/16 DIA *15/16 LG POP RIVET	*



ISSUED BY: JDP

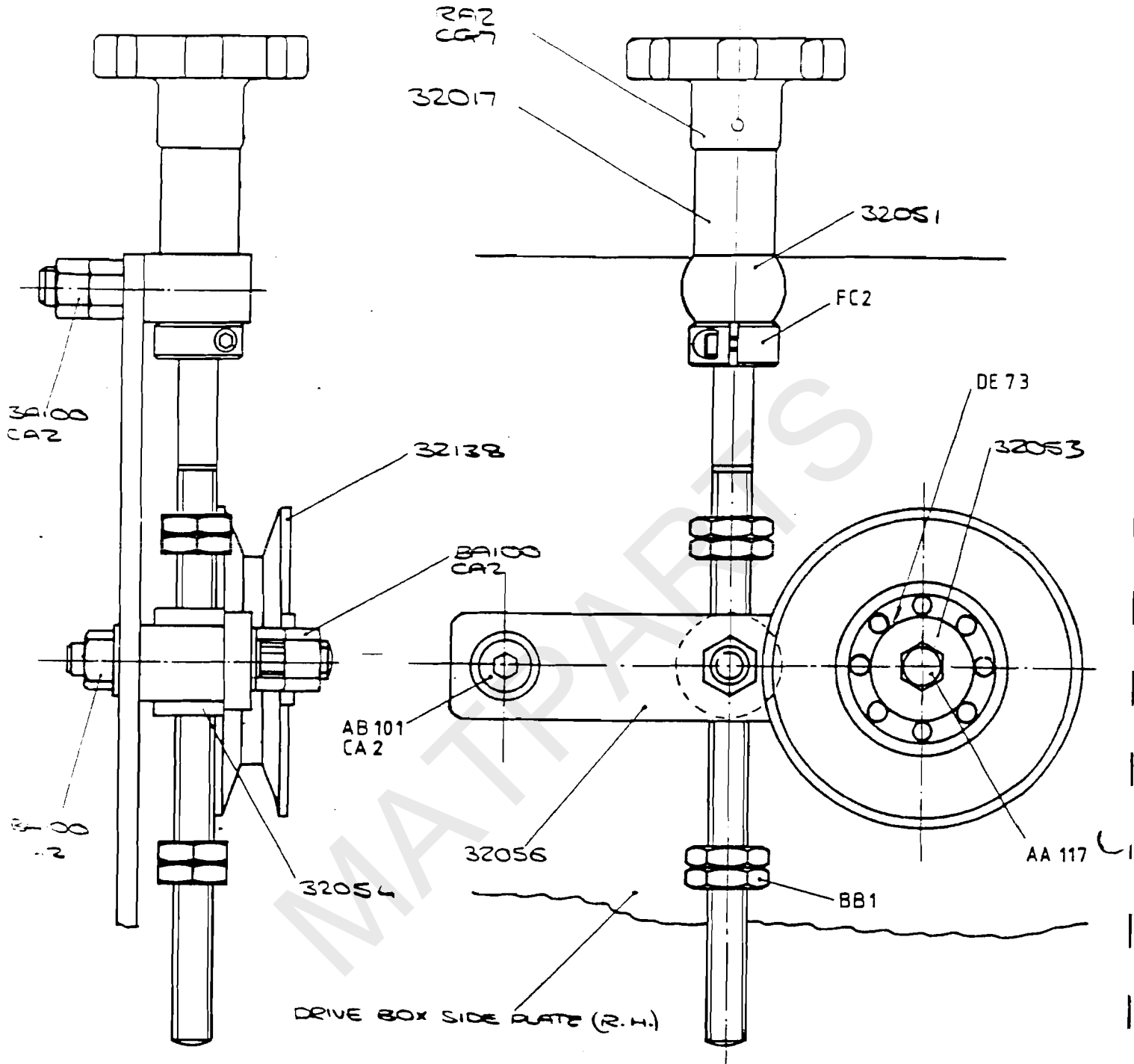
DATE: 20/9/86

PARTS LIST: 32174

MOD NO:

ISSUE NO: 5

NO OF SHEETS: 1



DRIVE BOX SIDE PLATE (R.H.)

Date			LIMITS	
Mod.			—	
Issue			UNLESS OTHERWISE STATED	
SCALE 1:1	MAT.	FINISH	ASSY. DRG.	No. OFF
DRAWN CTF	SPEC.	HEAT TREATMENT	32005	1
DATE 14:5:80	TITLE		DRAWING No.	
Belt Tensioner Pulley Assy			32175	

TITLE: BELT TENSIONER PULLEY ASSEMBLY

PARTS LIST: 32175

MACHINE TYPE  
RTE MK2/3/4

ASSY DRG QTY  
32005 1

NO OF SHEETS: 1

ISSUE NO: 3

PART NO	QTY	DESCRIPTION	REMARKS
32138	1	BELT TENSIONER PULLEY	MAKE FROM GA40
DE73	1	BEARING JOURNAL	
32053	1	BEARING RETAINING WASHER	
AA117	1	5/16 WHIT * 1LG HEX HD SCREW	
32056	1	BELT ADJUSTING LINK	
AB101	1	3/8 WHIT * 2LG SHCS	
BA100	1	3/8 WHIT NUT	
CA2	2	3/8 WASHER	
32017	1	BELT TENSIONER SCREW	
32051	1	BELT TENSIONER SCREW PIVOT	
RA2	1	PLASTIC HANDWHEEL	
CG7	1	1/8DIA * 1LG SPRING PIN	
FC2	1	3/8DIA SPLIT COLLAR	
BA100	2	3/8 WHIT NUT	
CA2	1	3/8 WASHER	
BB1	4	3/8 WHIT LOCKNUT	
32054	1	BELT TENSIONER NUT	
BA100	2	3/8 WHIT NUT	
CA2	1	3/8 WASHER	

ISSUED BY: JDF

DATE: 20/9/86

PARTS LIST: 32175

MOD NO:

ISSUE NO: 3

NO OF SHEETS: 1

TITLE: TABLE ASSEMBLY

PARTS LIST: 32176

MACHINE TYPE      ASSY DRG      QTY  
RTE MK1/2/3/4      32055      1

NO OF SHEETS: 1

ISSUE NO: 3

PART NO	QTY	DESCRIPTION	REMARKS
32074	1	TABLE FRAMES	ADD SUFFIX TO NO FOR TYPE: USE TYPE "E" UNLESS OTHERWISE STATED.
32077	1	TABLE TOP	
CK5	44	WOODSCREW NO8 * 5/8LG	
32258 TA3	4	TABLE FRICTION STRIP BOSTIK 10 - HYPERBOND (M890)	FIT USING TA3 * *

MATPARTS

ISSUED BY: JDF

DATE: 20/9/86

PARTS LIST: 32176

MOD NO:

ISSUE NO: 3

NO OF SHEETS: 1



TITLE: FOOT PLATE ASSEMBLY

PARTS LIST: 32177

MACHINE TYPE      ASSY DRG      QTY  
RTE MK1/2/3/4      32055      1

NO OF SHEETS: 1

ISSUE NO: 6

PART NO	QTY	DESCRIPTION	REMARKS
32070	1	FOOR PLATE SUPPORT	
AB102	2	3/8 WHIT * 1LG SHCS	
32076	1	FOOT PLATE	
AD12	12	1/4 WHIT * 1,1/4LG SKT CSK HD SCREW	
CA4	12	1/4 WASHER	
CB3	12	1/4 SPRING WASHER	
BA102	12	1/4 WHIT NUT	
32163	1	RUBBER MAT	
KB57	1	1/4 FOOT OPERATED SELF CENTERING VALVE	
KZC4	3	1/4 BSP TO 8 DIA MALE ELBOW	
KZU2	2	1/4 MUFFLER	
AA322	2	M8 * 50LG HEX HD SCREW	
BA306	2	M8 NUT	
CA204	4	M8 WASHER	
CB104	2	M8 SPRING WASHER	

ISSUED BY: JDP

DATE: 20/9/86

PARTS LIST: 32177

MOD NO:

ISSUE NO: 6

NO OF SHEETS: 1

DRIVE BOX END  
SIDE PLATE (R.H.)

32134

AA 140  
BA 100  
CA 2  
CB 1

DD 1

GA40  
JA1  
HC1

32038

GB39  
HC1  
JA6

DRIVE BOX END PLATE

MATRAN

Date				LIMITS  /	
Mod.					
Issued					
SCALE 1 2	MAT. /	FINISH /	UNLESS OTHERWISE STATED		
DRAWN GJF	SPEC. /	HEAT TREATMENT /	ASSY. DRG. 32005	No. OFF 1	
DATE 9 5 80					
			DRAWING No.		
			32193		
			TITLE		
			SEWING HEAD		
			DRIVE SHAFT		
			ASSY		

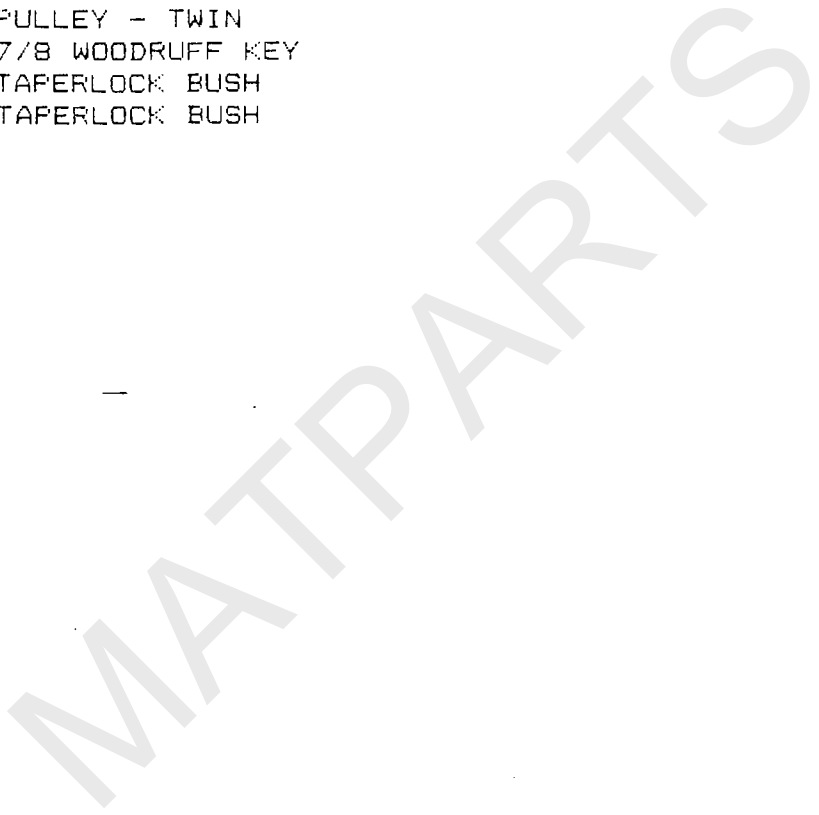
TITLE: SEWING HEAD DRIVE SHAFT ASSY

PARTS LIST: 32193

MACHINE TYPE ASSY DRG QTY  
RTE MK1/2/3/4 32005 1

NO OF SHEETS: 1  
ISSUE NO: 4

PART NO	QTY	DESCRIPTION	REMARKS
32134	2	SPACERS	
AA140	2	3/8 WHIT * 4LG HEX HD SCREW	
BA100	2	3/8 WHIT NUT	
CA2	2	3/8 WASHER	
CB1	2	3/8 SPRING WASHER	
DD1	2	3/4 OVAL FLANGE BEARING UNIT	
32038	1	SEWING HEAD DRIVE SHAFT	
GA40	1	PULLEY - SINGLE 71 PCD	
GB39	1	PULLEY - TWIN	
HC1	2	7/8 WOODRUFF KEY	
JA1	1	TAPERLOCK BUSH	
JA6	1	TAPERLOCK BUSH	

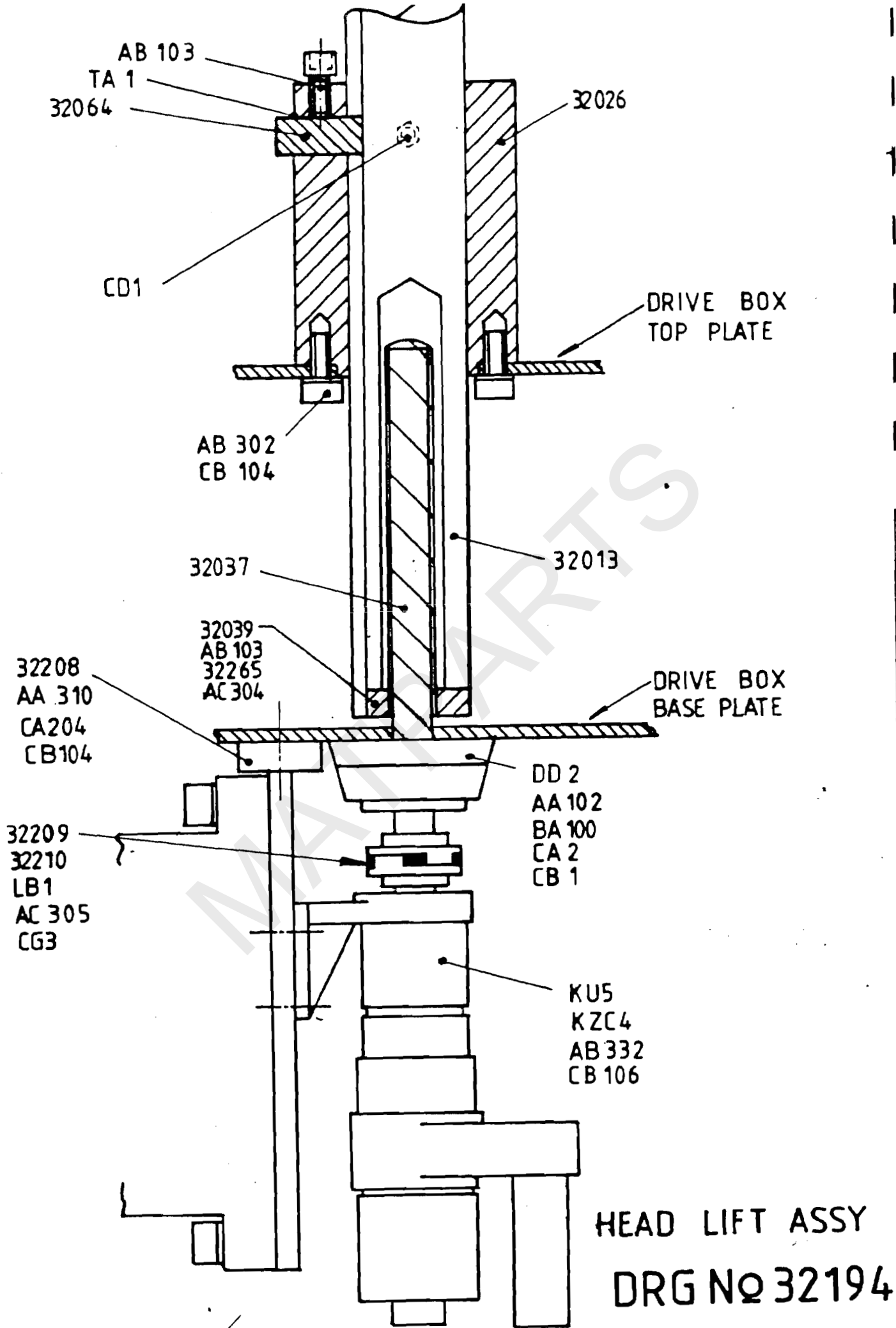


ISSUED BY: JDF DATE: 20/9/86

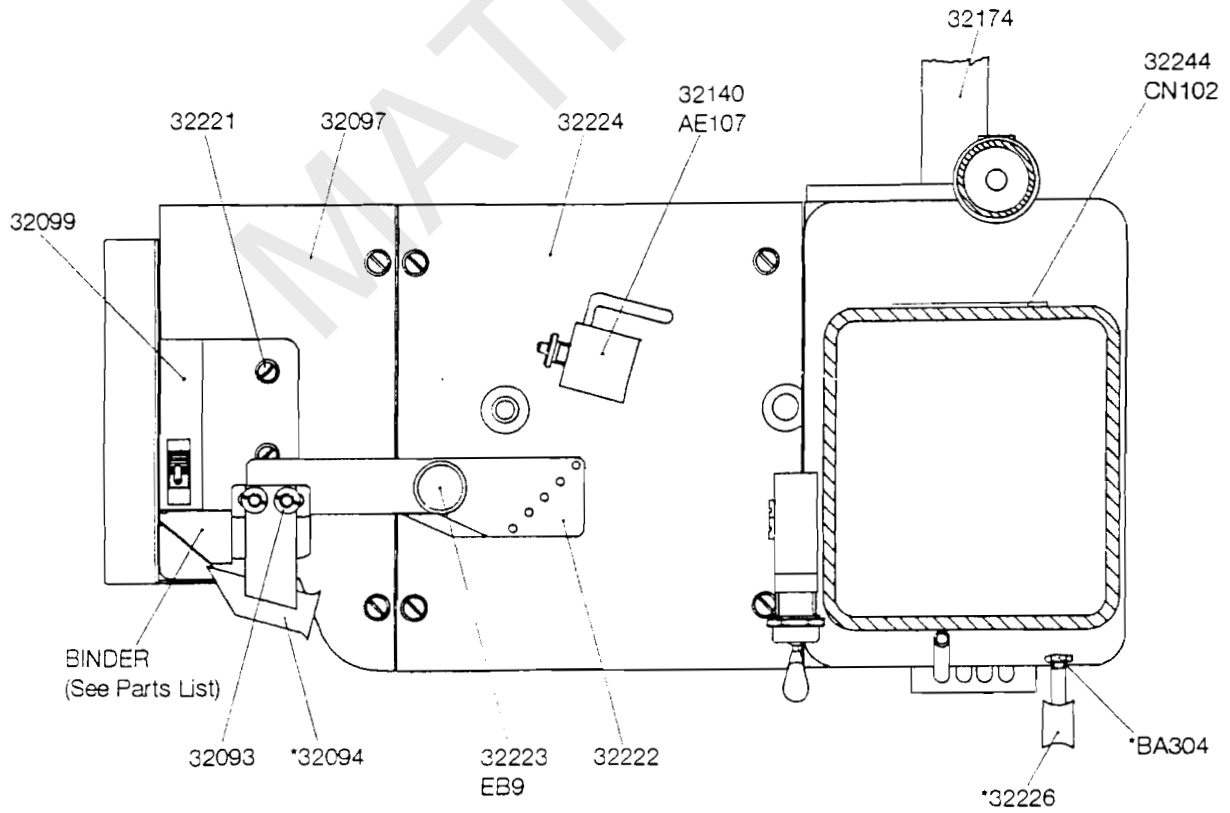
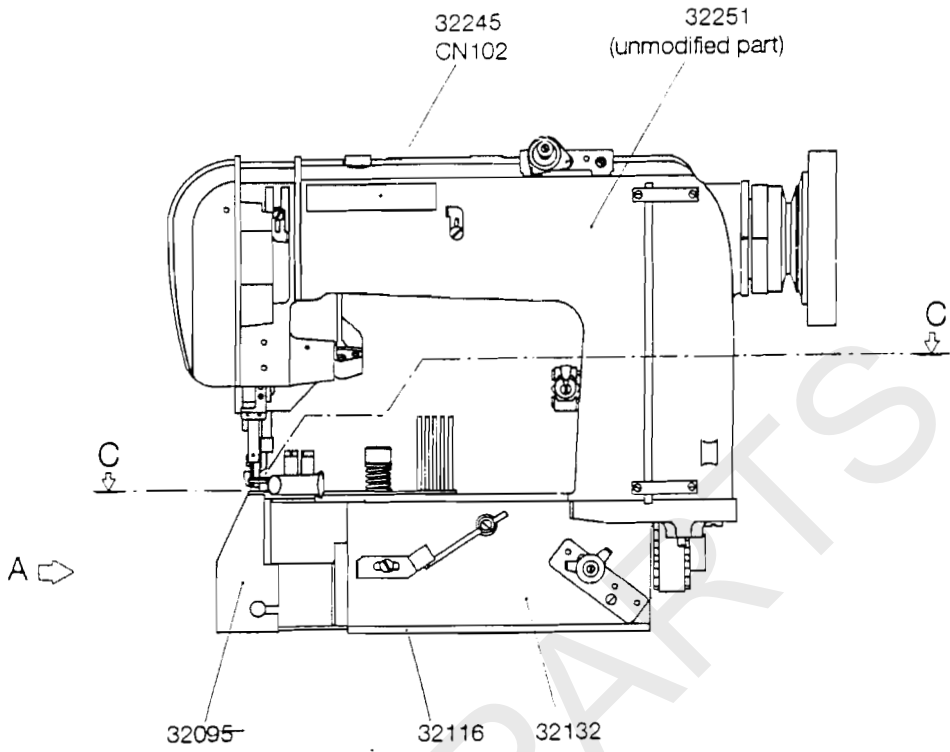
PARTS LIST: 32193

MOD NO: ISSUE NO: 4

NO OF SHEETS: 1

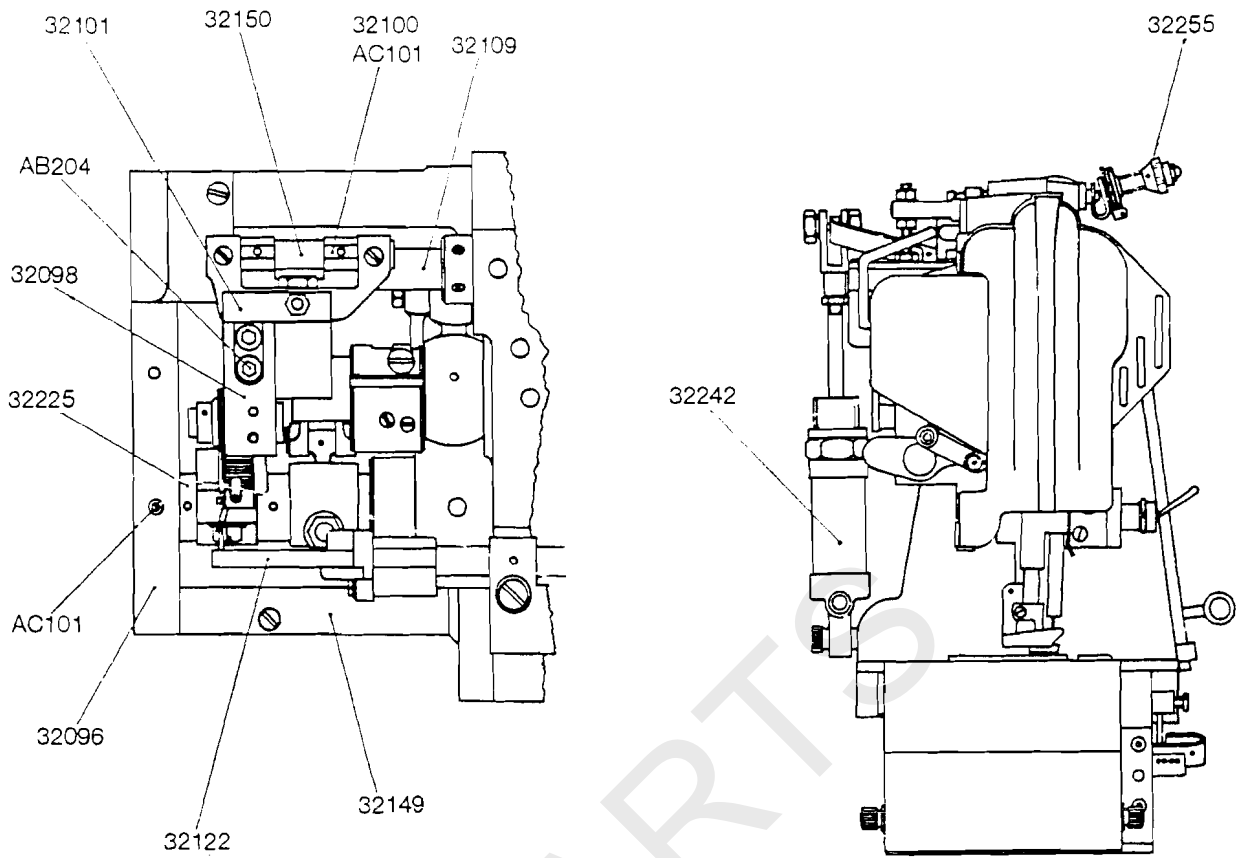


TITLE	R.T.E. HEAD
DRAWING No.	32250

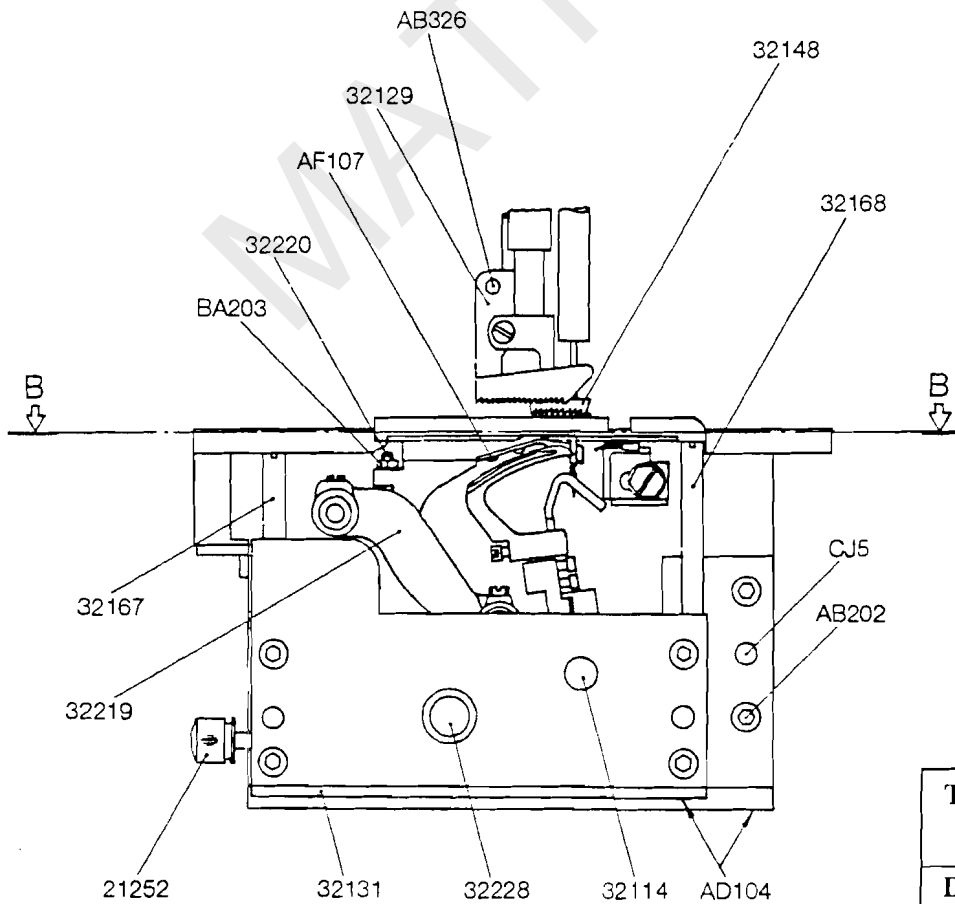


**SECTION 'CC'**

\*TAPE FILLER OPTION  
(See Parts List)



**SECTION 'BB' WITH BED PLATES REMOVED**



**VIEW ON 'A' WITH GUARD 32095 REMOVED**

TITLE
R.T.E. HEAD
DRAWING No.
32250

TITLE: HEAD LIFT ASSEMBLY

PARTS LIST: 32194

MACHINE TYPE ASSY DRG QTY  
RTE MK1/2/3/4 32005 1

NO OF SHEETS: 1

ISSUE NO: 11

PART NO	QTY	DESCRIPTION	REMARKS
32026	1	HEAD LIFT GUIDE BUSH	
32064	1	GUIDE PIN	
AB103	1	1/4 WHIT * 3/4LG SHCS	
TA1	1	SCREW LOCK ADHESIVE	
CD1	1	1/4BSF GREASE NIPPLE	
AB302	4	M8 * 25LG SHCS	
CB104	4	M8 SPRING WASHER	
32013	1	CARRIAGE SUPPORT	
32039	1	HEAD LIFT NUT	
AB103	4	1/4" WHIT * 3/4" LG SHCS	
32265	1	PLUG	
AC304	1	M6 * 6LG SKT HD GRUB SCREW	
32037	1	LIFTING SCREW	
DD2	1	5/8" OVAL FLANGE BEARING UNIT	
AA102	2	3/8" WHIT * 1 1/4" LG HEX HD SCREW	
BA100	2	3/8" WHIT NUT	
CA2	4	3/8" WASHER	
CB1	2	3/8" SPRING WASHER	
32209	1	MOD TO LA1	MAKE FROM LA1
32210	1	MDD TO LA1	MAKE FROM LA1
LB1	1	SPIDER COUPLING INNER (RUBBER)	
AC305	2	M8 * 10 SET SCREW	
CG3	1	3/16" * 1 1/2" LG SPRING PIN	
32208	1	AIR MOTOR BRACKET	
AA310	2	M8 * 20LG HEX HD SCREW	
CA204	2	M8 WASHER	
CB104	2	M8 SPRING WASHER	
KU5	1	AIR MOTOR ASSEMBLY	
KZC4	2	1/4" BSP TO 8 DIA MALE ELBOW	
AB332	4	M5 * 15LG SHCS	
CB106	4	M5 SPRING WASHER	

ISSUED BY: JDF

DATE: 20/9/86

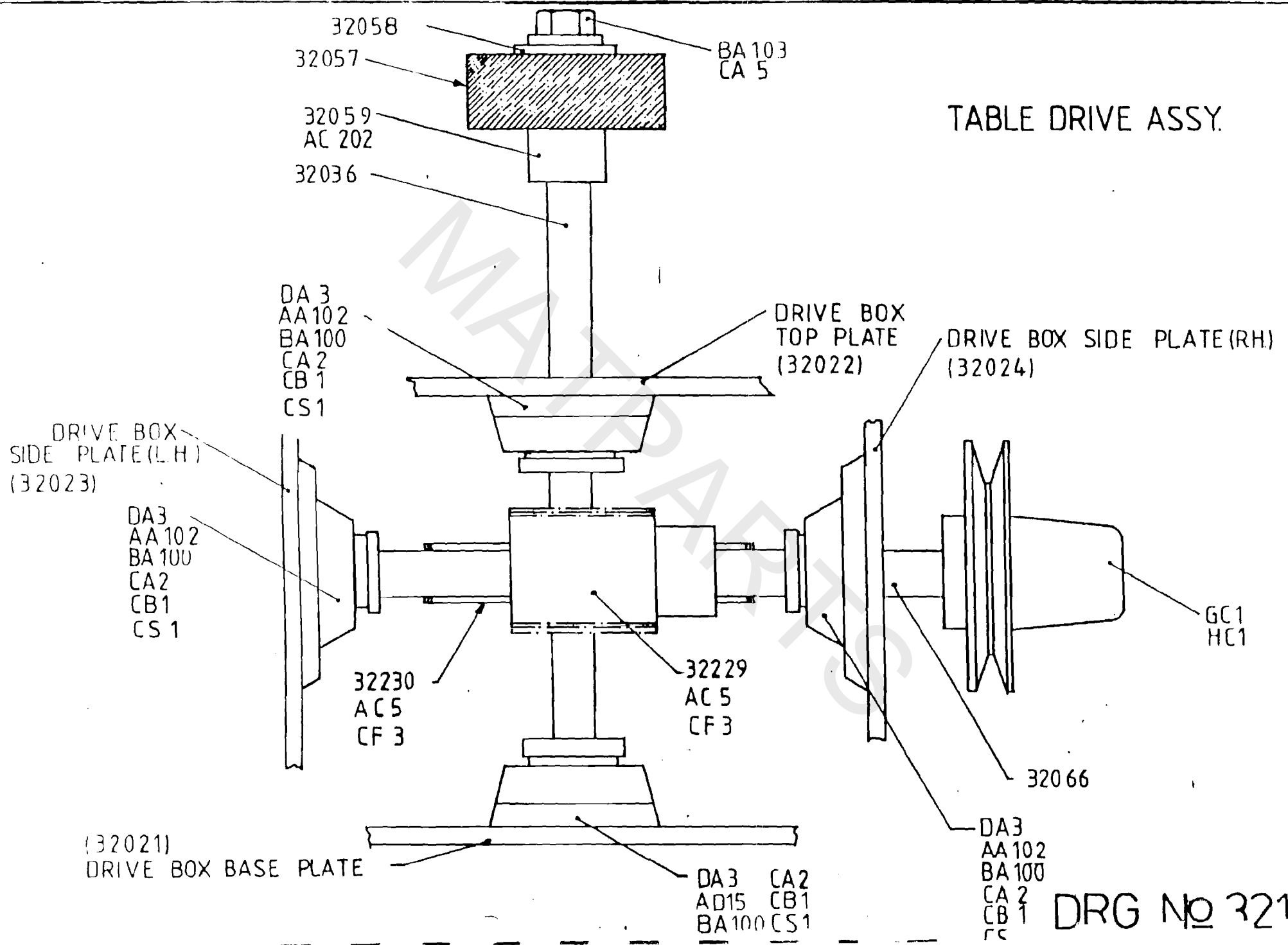
PARTS LIST: 32194

MOD NO:

ISSUE NO: 11

NO OF SHEETS: 1

# TABLE DRIVE ASSY.



DRG No 321951



TITLE: TABLE DRIVE ASSEMBLY

PARTS LIST: 32195

MACHINE TYPE      ASSY DRG      QTY  
RTE MK2/3/4      32005      1

NO OF SHEETS: 1

ISSUE NO: 4

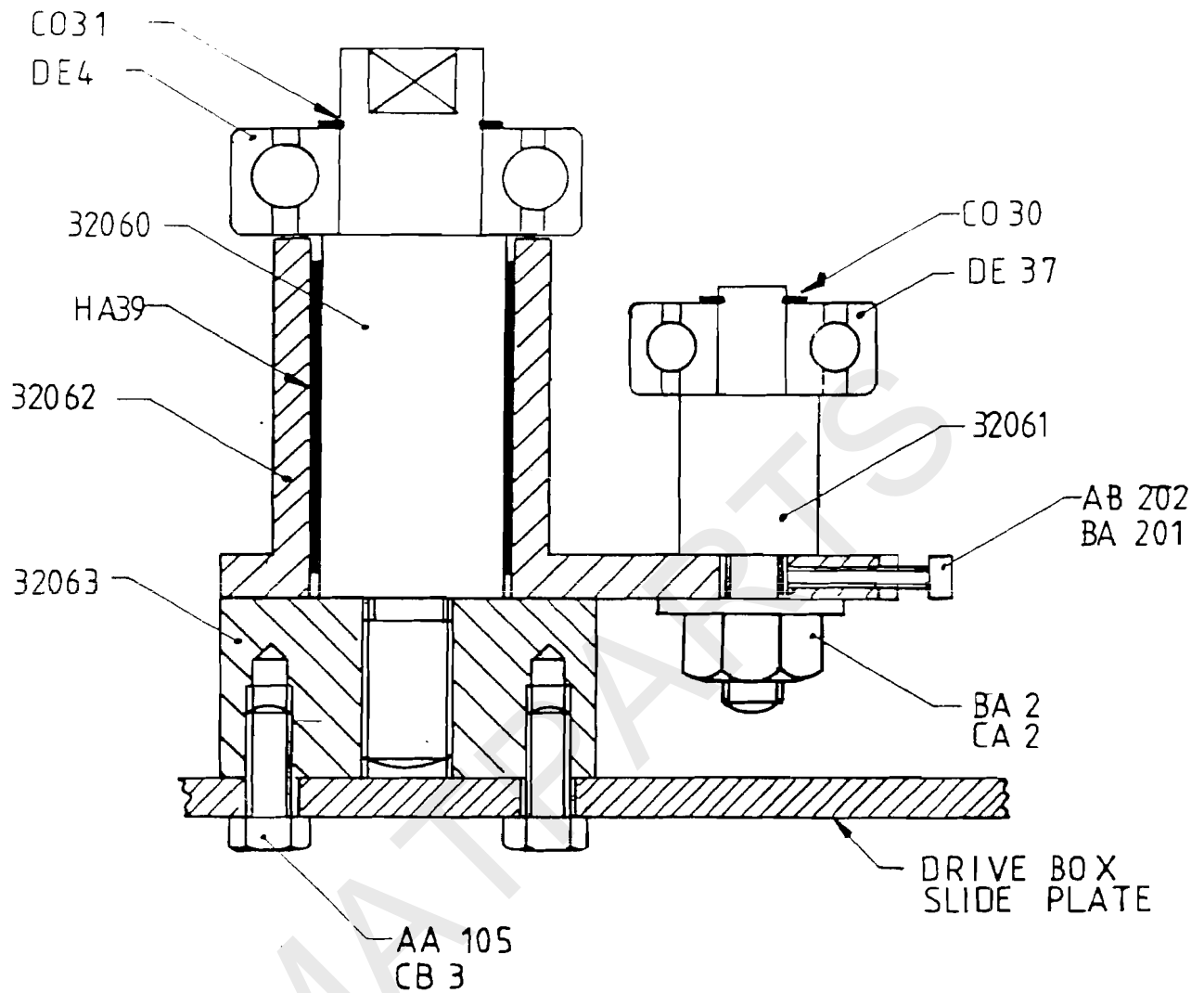
PART NO	QTY	DESCRIPTION	REMARKS
DA3	1	3/4 SQUARE FLANGE BEARING UNIT	FIT TO 32023
AA102	4	3/8 WHIT * 1,1/4LG HEX HD SCREW	
BA100	4	3/8 WHIT NUT	
CA2	8	3/8 WASHER	
CB1	4	3/8 SPRING WASHER	
CS1	1	5 DIA * 24LG SPIROL PIN	
DA3	1	3/4 SQUARE FLANGE BEARING UNIT	
AA102	4	3/8 WHIT * 1,1/4LG HEX HD SCREW	
BA100	4	3/8 WHIT NUT	
CA2	8	3/8 WASHER	
CB1	4	3/8 SPRING WASHER	
CS1	1	5 DIA * 24LG SPIROL PIN	
DA3	1	3/4 SQUARE FLANGE BEARING UNIT	FIT TO 32024
AA102	4	3/8 WHIT * LG HEX HD SCREW	
BA100	4	3/8 WHIT NUT	
CA2	8	3/8 WASHER	
CB1	4	3/8 SPRING WASHER	
CS1	1	5 DIA * 24LG SPIROL PIN	
DA3	1	3/4 SQUARE FLANGE BEARING UNIT	FIT TO 32021
AD15	4	3/8 WHIT * 1,1/4LG SHCS	
BA100	4	3/8 WHIT NUT	
CA2	4	3/8 WASHER	
CB1	4	3/8 WASHER	
CS1	1	5 DIA * 24LG SPIROL PIN	
32036	1	TABLE DRIVE WHEEL SHAFT	
32059	1	BOTTOM DRIVE WHEEL COLLAR	
AC202	1	1/4 WHIT * 1/2LG SKT SET SCREW	
32057	1	TABLE DRIVE WHEEL	
32058	1	TOP DRIVE WHEEL COLLAR	
CA5	1	1/2 WASHER	
BA103	1	1/2 WHIT NUT	
32230	1	WORM WHEEL	
AC5	1	5/16 BSF * 1/2LG SKT SET SCREW	
CF3	1	7/32 TAPER PIN	
32066	1	DRIVE SHAFT	
32229	1	WORM	
AC5	1	5/16 BSF * 1/2LG SKT SET SCREW	
CF3	1	7/32 TAPER PIN	
GC1	1	VARIABLE SPEED PULLEY 4" PCD	
HC1	1	7/8 WOODRUFF KEY	

ISSUED BY: JDP      DATE: 20/9/86

PARTS LIST: 32195

MOD NO:      ISSUE NO: 4

NO OF SHEETS: 1



Date				LIMITS	
Mod.				/	
Issue				UNLESS OTHERWISE STATED	
SCALE 1:1	MAT. _____	FINISH _____	ASSY. DRG.	No. OFF	
DRAWN GJF	SPEC. _____	HEAT TREATMENT _____	32005	2	
DATE 9:5:80					
			DRAWING No.		
			32196		
			TITLE GUIDE WHEEL ASSY		

TITLE: GUIDE WHEEL ASSEMBLY

PARTS LIST: 32196

MACHINE TYPE      ASSY DRG      QTY  
RTE MK1/2/3/4      32005      1

NO OF SHEETS: 1

ISSUE NO: 4

FART NO	QTY	DESCRIPTION	REMARKS
32060	1	TABLE GUIDE ROLLER STUD - LARGE	
CO31	1	20 DIA EXT CIRCLIP	
DE4	1	20 DIA JOURNAL BEARING	-
32061	1	TABLE GUIDE ROLLER STUD - SMALL	
BA2	1	3/8 BSF NUT	
CA2	1	3/8 WASHER	
CO30	1	10 DIA EXT CIRCLIP	
DE37	1	10 DIA JOURNAL BEARING	-
32062	1	TABLE GUIDE SWIVEL ARM	
AB202	1	2BA * 3/4LG SHCS	
BA201	1	2BA NUT	
HA39	1	OILITE BUSH 1 DIA * 1,1/8 DIA * 1,1/8LG	-
32063	1	TABLE GUIDE ROLLER BASE	
AA105	8	1/4 WHIT * 3/4LG HEX HD SCREW	
CB3	8	1/4 SPRING WASHER	

ISSUED BY: JDP

DATE: 20/9/86

PARTS LIST: 32196

MOD NO:

ISSUE NO: 4

NO OF SHEETS: 1

TITLE: PNEUMATIC PRESSER FOOT LIFT ASSY PARTS LIST: 32242

MACHINE TYPE	ASSY DRG	QTY	NO OF SHEETS: 1
RTE MK3	32250	1	
RTE MK4	32290	1	ISSUE NO: 9

PART NO	QTY	DESCRIPTION	REMARKS
32203	1	CLEVIS & LOCKNUT	MAKE FROM KX4
32202	2	CLEVIS SCREW	MAKE FROM AA319
CJ101	1	DOWEL PIN 4 DIA * 16LG	
KA46	1	AIR CYLINDER 1 DIA * 2 STROKE	
CM5	1	5/16 WHIT * 3/8 * 3/4LG SHOULDER SCREW	
32204	2	TRUNNION SPACER	
KZA2	1	1/8 BSP TO 4 TUBE MALE STUD ADAPTOR	
KZU1	1	1/8 BSP MUFFLER	
KB173	1	MIDGET POPPET VALVE	
AF302	2	M4 * 25LG PAN HD SCREW	
KZC1	1	1/8 BSP TO 4 TUBE ELBOW	
KZA2	1	1/8 BSP TO 4 TUBE MALE STUD ADAPTOR	
KZU1	1	1/8 BSP MUFFLER	
KJ7	2	SINGLE CLIP 4 DIA TUBE	
AF201	2	M5 * 12LG SKT BUTTON SCREW	
CB106	2	M5 SPRING WASHER	
32205	1	TRUNNION PIVOT HOLE DETAILS	
KZT1	1	4MM DIA FEMALE Y-PIECE	
KZA2	1	1/8 BSP TO 4MM TUBE MALE STUD ADAPTOR	
KG2	1	MIN REGULATOR 0-25 PSI 1/8 BSP	SET TO 3PSI & LOCK
KD2	1	GAUGE 0-1.6 BAR 1/8 BSP	
KT336	1	REGULATOR MOUNTING BRACKET	
AB313	2	M5 * 12 LG SHCS	
CB106	2	M5 SPRING WASHER	
CA206	2	M5 WASHER	
KZA9	1	1/8 BSP TO 8 MM DIA TUBE MALE STUD ADAPTOR	USE 8MM DIA POLY-URETHANE TUBE FROM THIS TO KANSAI HD.

ISSUED BY: JDF DATE: 20/9/86 PARTS LIST: 32242

MOD NO: ISSUE NO: 9 NO OF SHEETS: 1

TITLE: PEDESTAL ASSEMBLY

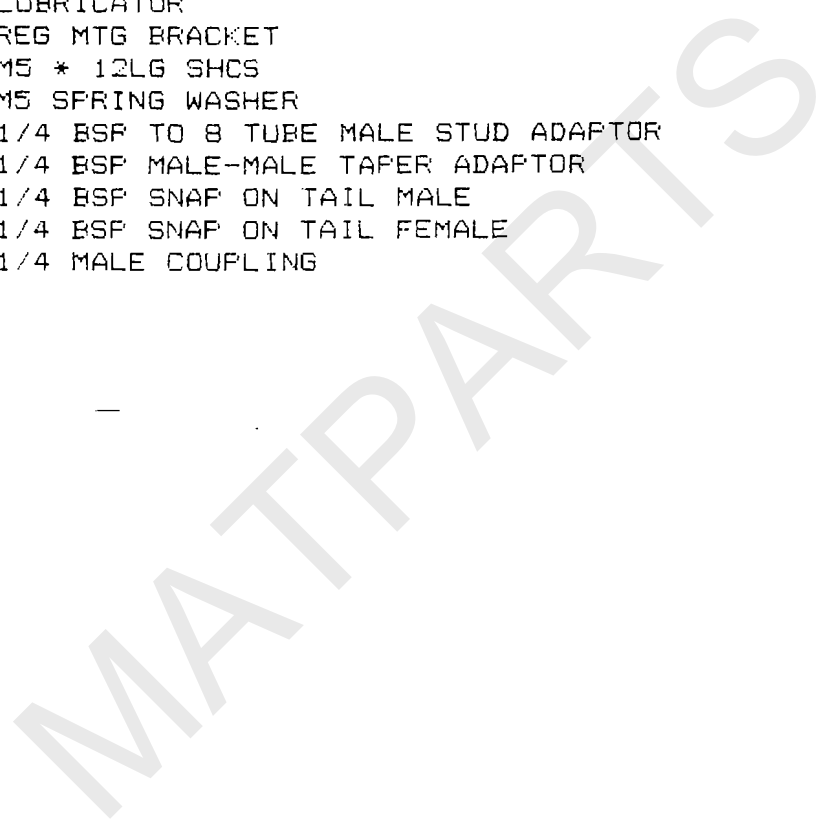
PARTS LIST: 32243

MACHINE TYPE ASSY DRG QTY  
RTE MK 1/2/3/4 32055 1

NO OF SHEETS: 1

ISSUE NO: 4

PART NO	QTY	DESCRIPTION	REMARKS
32068	1	PEDESTAL FABRICATION	*
32072	5	FOOT	-
BA302	5	M16 NUT	-
KC1	1	FILTER/REGULATOR	
KD1	1	PRESSURE GAUGE	
KN2	1	LUBRICATOR	
KT33	1	REG MTG BRACKET	
AB313	2	M5 * 12LG SHCS	
CB106	2	M5 SPRING WASHER	
KZA4	1	1/4 BSP TO 8 TUBE MALE STUD ADAPTOR	
KH7	1	1/4 BSP MALE-MALE TAPER ADAPTOR	
KE31	1	1/4 BSP SNAP ON TAIL MALE	
KE2	1	1/4 BSP SNAP ON TAIL FEMALE	
KE34	1	1/4 MALE COUPLING	



ISSUED BY: JDF DATE: 20/9/86

PARTS LIST: 32243

MOD NO: ISSUE NO: 4

NO OF SHEETS: 1

TITLE: TOOL KIT

PARTS LIST: 32246

MACHINE TYPE      ASSY Dwg      QTY  
RTE NR374            3230071      1

NO OF SHEETS: 1

ISSUE NO: 6

PART NO	QTY	DESCRIPTION	REMARKS
MIS37	1	IMPERIAL ALLEN KEY SET	
	1	SINGER SEWING HEAD TOOL KIT	EXCLUDE OIL AND OIL CAN
MIS38	1	WESCO OIL CAN	
MIS25	1	METRIC ALLEN KEY SET	
MIS54	1	0.050" ALLEN KEY	
MIS62	1	8-9mm OPEN ENDED SPANNER	
EF2	1	DRIVE BELT DIA 5/16" * 90" LG	
CL3	1	JUBILEE CLIP	
MIS10	1	SCREWDRIVER	
MIS62	1	SPANNER	
MF3	1	SCREWDRIVER	

ISSUED BY: RH

DATE: 11/2/87

PARTS LIST: 32246

MOD NO: 970

ISSUE NO: 6

NO OF SHEETS: 1

TITLE: CLUTCH MOTOR CONTROL - ELNOR

PARTS LIST: 32254

MACHINE TYPE  
RTE MK3/4

ASSY DRG QTY  
32005 1

NO OF SHEETS: 1

ISSUE NO: 3

PART NO	QTY	DESCRIPTION	REMARKS
32049	1	KNEE PLATE	
MB1	1	KNEE PAD	
AC207	1	5/16" BSW * 5/16" LG GRUBSCREW	SHORTEN TO 1/4"
32164	1	KNEE BAR	
32165	1	KNEE BAR CLAMP	
AB305	2	M6 * 20LG SHCS	
32160	1	PIVOT SHAFT	
32161	1	PIVOT BUSH	
AC304	1	M6 * 6LG GRUBSCREW	
FD1	1	SPLIT COLLAR 12 DIA	
32162	1	PIVOT ARM	
32253	1	BALL JOINT TREADLE ROD - ELNOR	MAT: MB3 & BD38
32159	1	PIVOT BRACKET	
AF207	4	M6 * 5LG SKT BUTTON HD SCREW	
HA79	2	OILITE BUSH 16DIA * 12BORE * 10LG	
XA24	1	CLUTCH MOTOR - ELNOR 240/415V 3PH	MOTOR OPTION 1
QJ16	1	STARTER 440V 1.9 - 2.8 AMP	"
XA25	1	CLUTCH MOTOR - ELNOR 220/380V 3PH	MOTOR OPTION 2
QJ17	1	STARTER 380V 1.9 - 2.8 AMP	"
XA25	1	CLUTCH MOTOR - ELNOR 220/380V 3PH	MOTOR OPTION 3
QJ18	1	STARTER 220V 2.8 - 4.1 AMP	"
		NOTE: ALL MOTORS ISSUED WITH 70mm FCD PULLEY & ARE 2800RPM	
BA101	3	5/16 WHIT NUT	
CA3	6	5/16 WASHER	
CB2	3	5/16 SPRING WASHER	
AB301	2	M5 * 20LG SHCS	
AA135	3	5/16 WHIT * 2,1/4LG HEX HD SCREW	
32280	1	EARTH CONNECTION WIRE	REF DRG 32279

ISSUED BY: FR

DATE: 23/1/86

PARTS LIST: 32254

MOD NO: 928

ISSUE NO: 3

NO OF SHEETS: 1

TITLE: JUMBO TAPE ATTACHMENT (COMPLETE) PARTS LIST: 32275

MACHINE TYPE ASSY DRG QTY NO OF SHEETS: 1  
RTE MK4 32301 1  
ISSUE NO: 1

PART NO QTY DESCRIPTION REMARKS

\*\*\*\*\* \*\*\* NOTE THIS ASSEMBLY IS AN OPTIONAL ACCESS\*\*\*\*\*

32087 1 FILLER CARRIER ASSEMBLY  
AA115 2 1/4 WHIT \* 5/8LG HEX HD SCREW  
CA4 2 1/4 WASHER  
CB3 2 1/4 SPRING WASHER

PARTS FITTED TO SEWING HEAD:

32226 1 FILLER GUIDE RING  
BA304 1 M6 NUT - FILLER GUIDE RING LOCKNUT  
32094 1 FILLER GUIDE TUBE

\*\*\*\*\* BINDER OPTIONS \*\*\*\*\*

32241 1 TAPE FILLER BINDER (40452 \* 33 \* 7)  
32248 1 TAPE FILLER BINDER (40452 \* 35 \* 7)  
32249 1 TAPE FILLER BINDER (40452 \* 36 \* 7)  
32227 1 TAPE FILLER BINDER (40452 \* 38 \* 7) STD FILLER BINDER  
32235 1 TAPE FILLER BINDER (40452 \* 40 \* 7)  
32236 1 TAPE FILLER BINDER (40452 \* 42 \* 7)

ISSUED BY: JDF DATE: 20/9/86 PARTS LIST: 32275  
MOD NO: ISSUE NO: 1 NO OF SHEETS: 1



TITLE: RTE SEWING HEAD (CONV OF SINGER) PARTS LIST: 32290-2

MACHINE TYPE: RTE MK4  
 ASSY DRS: 32301  
 QTY: 1  
 NO OF SHEETS: 2  
 ISSUE NO: 4

PART NO	QTY	DESCRIPTION	REMARKS
32268	1	BINDER BRACKET STEADY	
AB206	2	2 BA * 3/8"LG BROS	-
32140	1	TAPE TENSIONER ASSEMBLY	
AE107	2	4 BA * 1/2"LG CHEESE HD SCREW	REDUCE TO 3/8 LONG
32174	1	TAPE REEL ASSEMBLY	-
32242	1	PNEUMATIC PRESSER FOOT LIFT ASSEMBLY	
32245	1	SMALL MATRAMATIC LABEL	REMOVE SINGER LABEL
ON102	4	No 0 * 3/16"LG HAMMER DRIVE SCREW	FIT MATRAMATIC LABEL IN SIMILAR POSITION DRILL 1.65mm HOLES FOR HAMMER DRIVE SC
*****BINDER OPTIONS*****			
32092	1	TAPE BINDER (40452 * 16 * 5)	STANDARD
32231	1	TAPE BINDER (40452 * 19 * 5)	83/84 RUSSIAN
32232	1	TAPE BINDER (40452 * 20 * 6)	
32240	1	TAPE BINDER (40452 * 21 * 6)	83/84 RUSSIAN
2277 → 32267	1	TAPE BINDER (40452 * 24 * 6) ← 40452x23x6	
32233	1	TAPE FILLER BINDER (40452 * 25 * 6)	
32234	1	TAPE FILLER BINDER (40452 * 27 * 6)	
32276	1	TAPE FILLER BINDER (40452 * 31 * 6)	
32241	1	TAPE FILLER BINDER (40452 * 33 * 7)	*
32248	1	TAPE FILLER BINDER (40452 * 35 * 7)	
32249	1	TAPE FILLER BINDER (40452 * 36 * 7)	
32227	1	TAPE FILLER BINDER (40452 * 38 * 7)	STD FILLER BINDER
32235	1	TAPE FILLER BINDER (40452 * 40 * 7)	
32236	1	TAPE FILLER BINDER (40452 * 42 * 7)	
32237	1	SELF TAPE BINDER (40452 * 38 * 5 * 8)	1, 1/2" TO 5/8"
32238	1	SELF TAPE BINDER (40452 * 38 * 5 * 10)	1, 1/2" TO 3/4"
32239	1	SELF TAPE BINDER (40452 * 57 * 7 * 19)	2, 1/4" TO 1, 1/2"
*****			
32255	1	THREAD TENSIONER NUT	*
32199	1	BASE END PLATE PLUG	*
CS6	1	3 DIA * 20LG SPIROL PIN	REMOVE EXISTING PIN IN S622 FOOT LIFT- ING SHAFT LEVER. RE- ASSEMBLE LEVER ON SHAFT S611 USING LOCTITE 601 & FIT SPIROL PIN CS6
9718	1	LOOP DEFLECTOR	

ISSUED BY: GRJ      DATE: 10/2/89      PARTS LIST: 32290-2  
 MCD NO:              ISSUE NO: 4              NO OF SHEETS: 2

TITLE: RTE SEWING HEAD (CONV OF SINGER) PARTS LIST: 32290

MACHINE TYPE            ASSY DRG    QTY            NO OF SHEETS: 2  
 RTE MK4                32301       1

ISSUE NO: 1

PART NO	QTY	DESCRIPTION	REMARKS
32291	1	RTE HEAD SINGER PARTS (NON-MODIFIED)	MAT MA11
32132	1	MACHINE BASE	
32149	1	BASE END PLATE BRACKET	
32096	1	BASE END PLATE	
32199	1	BASE END PLATE - PLUG	FIT TO 32096
AB202	6	2 BA * 3/4LG SHCS	
CJ5	3	1/4 DIA * 7/8LG DOWEL PIN	4 BA EXTRACTION
AC101	1	2 BA * 3/8LG SKT GRUB SCREW	
32131	1	BASE COVER PLATE	
32116	1	BASE PLATE	
AD104	8	2 BA * 1/2LG SKT CSK SCREW	-
32225	1	LOOPER CARRIER	
32114	1	LOOPER ROCKER SHAFT	-
32228	1	FEED LIFTING ROCK SHAFT	
32109	1	FEED DRIVING ROCK SHAFT	
32100	1	FEED DRIVING ROCK FRAME	
AC101	2	2 BA * 3/8LG SKT GRUB SCREW	
32219	1	FEED BAR	
32150	1	FEED BAR SHAFT	-
32101	1	FEED DOG LIFTING SHANK	
32220	1	FEED DOG LIFTING SHANK ADJUSTING SCREW	
BA203	1	4 BA NUT	
32098	1	FEED DOG	
AB204	2	2 BA * 1/4LG SHCS	
AF107	2	6 BA * 1/4LG ROUNDHEAD SCREW	-
32122	1	SPREADER	
32167	1	BED PLATE SUPPORT SCREW-SHORT	
32168	1	BED PLATE SUPPORT SCREW-LONG	
32097	1	BED PLATE LEFT	
32099	1	THROAT PLATE	
32221	2	2 BA * 1/4LG CHEESE HD SCREW	
32224	1	BED PLATE RIGHT	-
32129	1	PRESSER FOOT	
AB326	1	M4 * 8LG SHCS	
32148	1	VIBRATING PRESSER FOOT	-
32095	1	SEWING MACHINE GUARD	
21252	2	COVER PLATE CLAMP SCREW ASSEMBLY	SUCCESS PART
32222	1	TAPE TENSION & BINDER BRACKET	
32223	1	BINDER PIVOT BOLT	
EB9	1	PIVOT BOLT COMPRESSION SPRING	ENTEX NO 129
32093	2	BINDER LOCKING NUT	

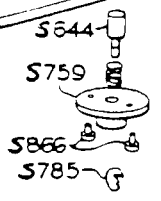
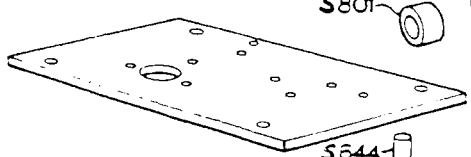
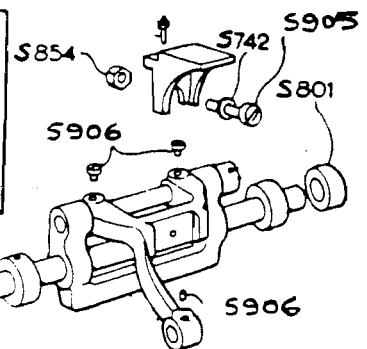
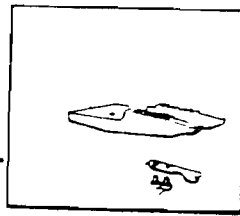
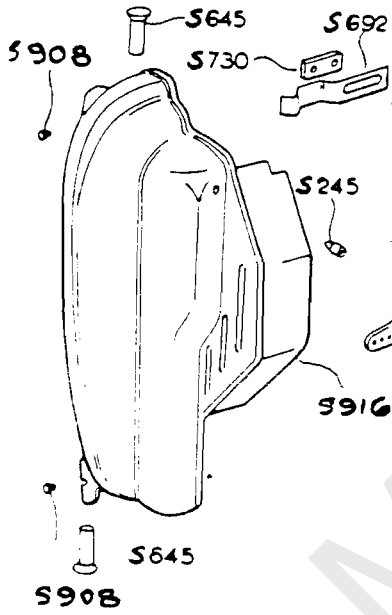
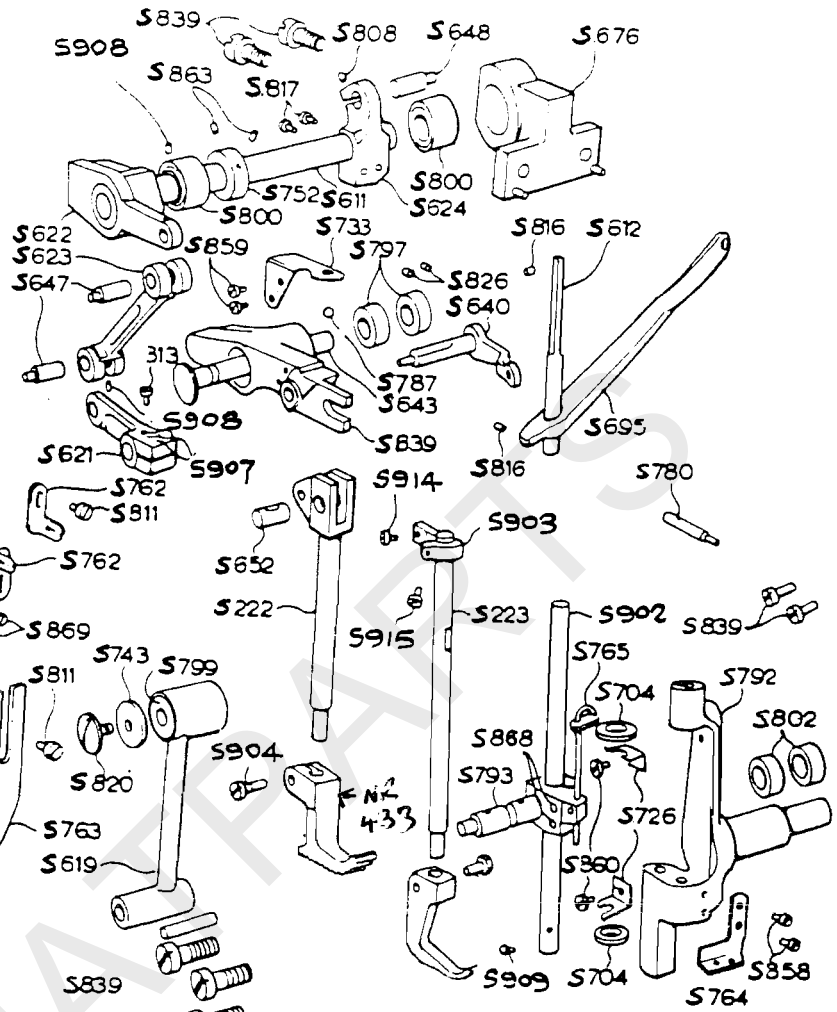
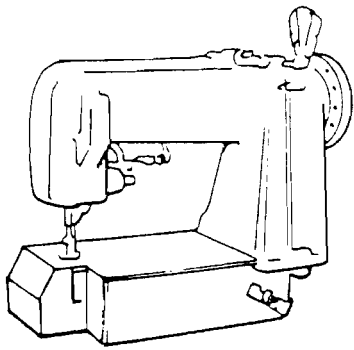
ISSUED BY: JDP            DATE: 20/9/86

PARTS LIST: 32290

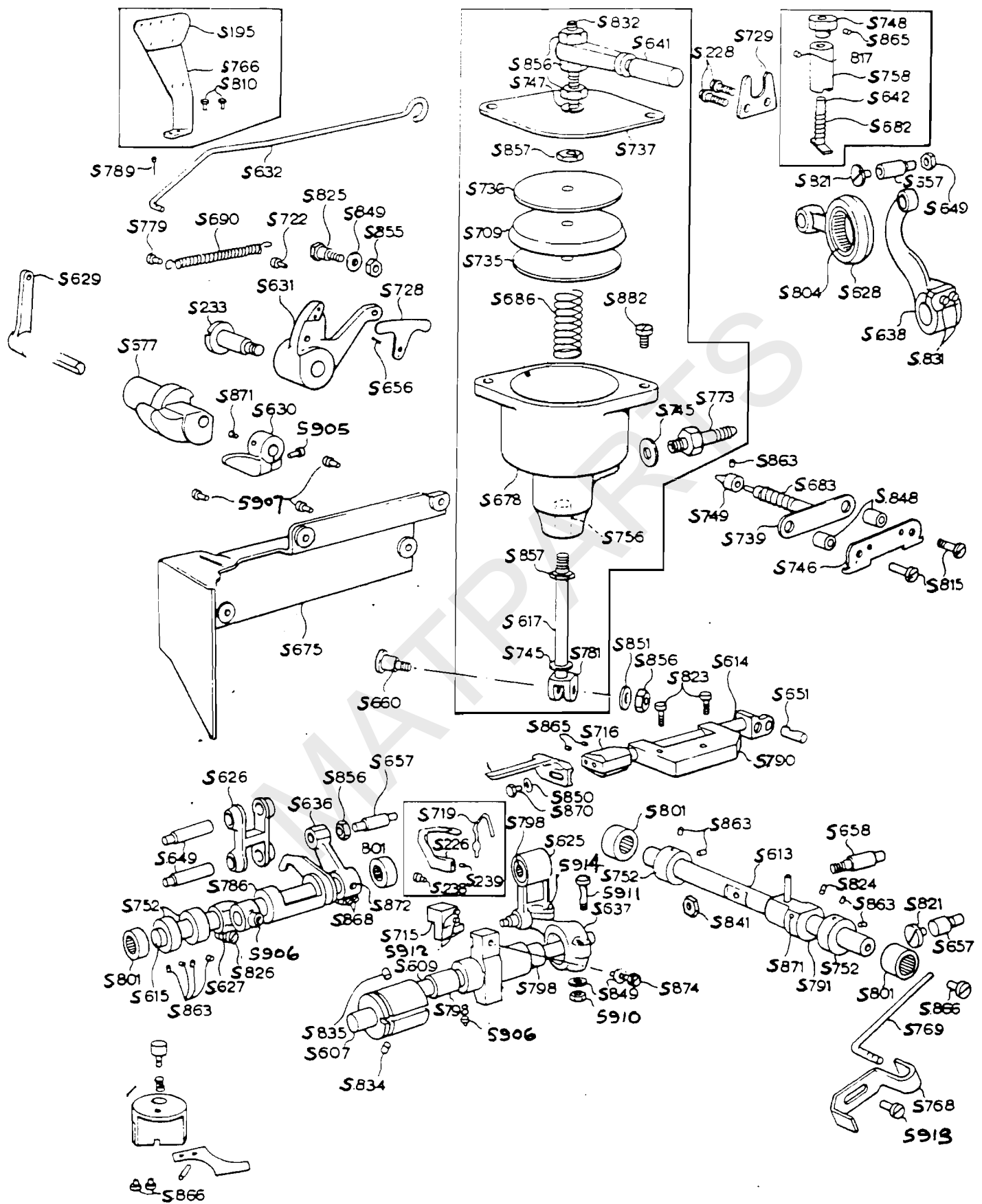
MOD NO:

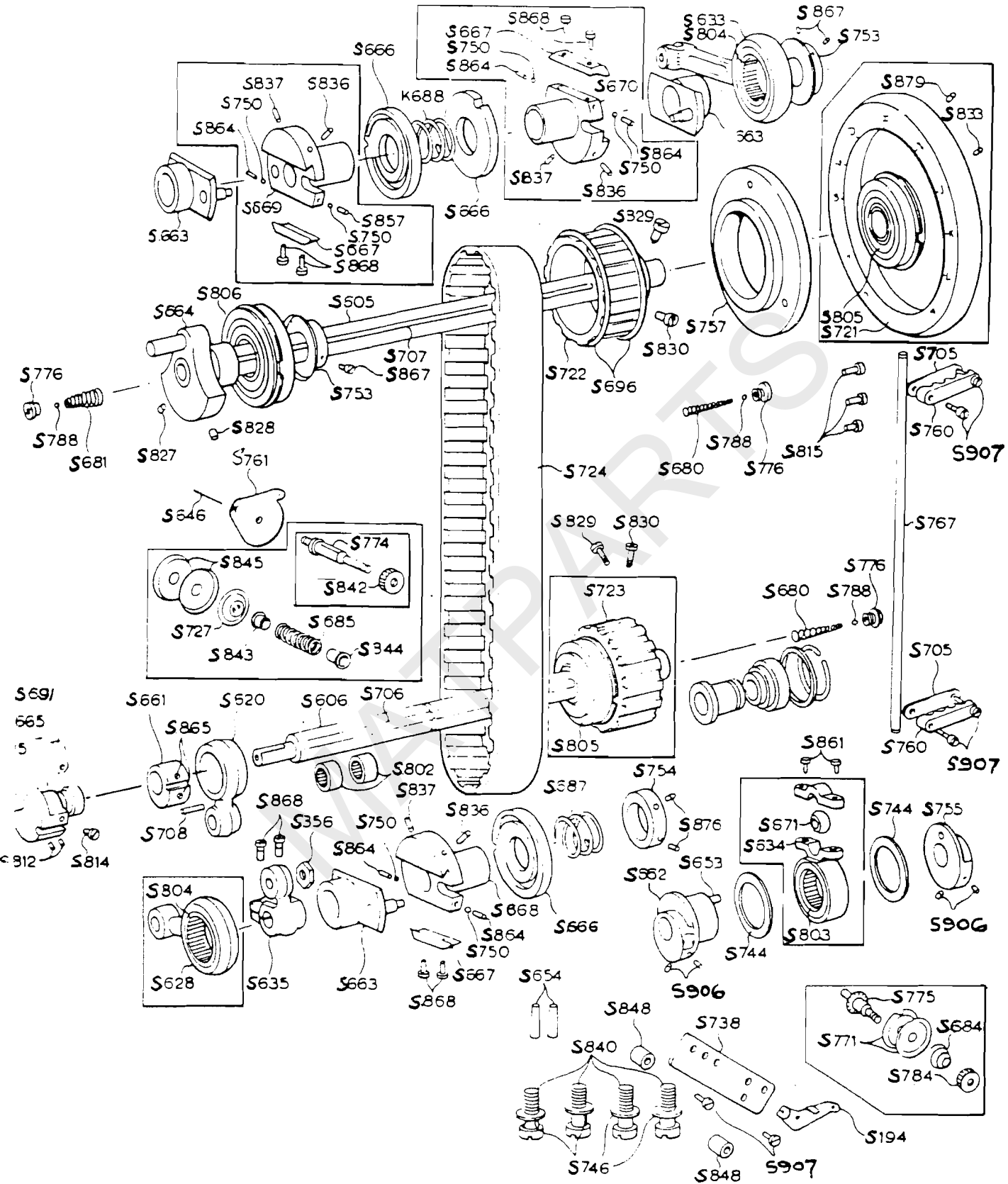
ISSUE NO: 1

NO OF SHEETS: 2



MAT-32098 FEED DOG  
 267665 LOOP REFLECTOR  
 MAT-AF107 Loop Deflector Screws S913





TITLE: R.T.E. SEWING HEAD (SINGER PARTS) PARTS LIST: 32291

MACHINE TYPE R.T.E. MH  
ASSY DRG 32290  
QTY 1

NO OF SHEETS: 6

ISSUE NO: 2

PART NO	QTY	DESCRIPTION	REMARKS
S194	1	LOOPER THREAD TENSION GUIDE	
S195	1	LOOPER THREAD GUIDE	
S222	1	WALKING FOOT SHANK	
S223	1	FOOT SHANK	
S902	1	NEEDLE BAR	
S226	1	LOOPER	
S903	1	PRESSER FOOT GUIDE	
S904	6	SCREW	
S905	4	SCREW	NOTE: NORMAL SPARE
S906	9	SCREW	PARTS REQUIREMENTS
S231	3	SCREW	ARE WITHIN THE RANGE
S907	11	SCREW	S194 TO S245 AND
S233	1	LIFTER LEVER PIN	S902 TO S916
S234	3	SCREW	
S909	1	SCREW	
S910	1	NUT	
S911	1	SCREW	
S238	1	SCREW	
S239	1	SCREW	
S912	3	SCREW	
S913	9	SCREW FOR BASE COVER	
S914	1	SCREW	
S915	2	SCREW	
S916	1	HEAD COVER A	
S245	1	HEAD COVER PIN	
S605	1	UPPER MAIN SHAFT	
S606	1	LOWER MAIN SHAFT	
S607	1	LOOPER SHAFT BUSHING (FRONT)	
S609	1	LOOPER SHAFT	
S610	1	FEED BAR HINGED PIN	
S611	1	FOOT LIFTING SHAFT	
S612	1	PRESSER FOOT GUIDE BAR	
S613	1	SPREADER DRIVING SHAFT	
S614	1	SPREADER BAR	
S615	1	FEED LIFTING SHAFT	
S617	1	AIR CYLINDER SHAFT	
S619	1	NEEDLE BAR CRANK ROD	
S620	1	FEED LIFTING ROD	
S621	1	FOOT LIFTING LEVER	
S622	1	FOOT LIFTING SHAFT LEVER	
S623	1	FOOT LIFTING LINK	
S624	1	LIFTING SHAFT LEVER	
S625	1	LOOPER DRIVING ROD	

ISSUED BY: GDP DATE: 15/1/87

PARTS LIST: 32291

MOD NO: 1

ISSUE NO: 2

NO OF SHEETS: 6

TITLE: R.T.E. SEWING HEAD (SINGER PARTS) PARTS LIST: 32291-2

MACHINE TYPE ASSY DRG QTY  
 R.T.E. MK4 32290 1

NO OF SHEETS: 6

ISSUE NO: 1

PART NO	QTY	DESCRIPTION	REMARKS
S626	1	FEED LIFTING LINK	
S627	1	FEED LIFTING LEVER	
S628	2	DRIVING ROD	
S629	1	FOOT LIFTER CRANK LEVER	
S630	1	FOOT LIFTING ARM	
S631	1	FOOT LIFTING LEVER	
S632	1	FOOT LIFTING ROD	
S633	1	LIFTING SHAFT DRIVING ROD	
S634	1	SPREADER DRIVING ROD	
S635	1	FEED DRIVING SHAFT LEVER	
S636	1	FEED LEVER	
S637	1	LOOPER DRIVING LEVER	
S638	1	NEEDLE BAR DRIVING LEVER	
S639	1	WALKING FOOT LIFTING LEVER	
S640	1	FOOT LIFTING LEVER	
S641	1	AIR CYLINDER PIN	
S642	1	STITCH ADJUSTING STUD	
S643	1	DRIVING LEVER PIN	
S644	1	FEED ADJUSTING STUD	
S645	2	HEAD COVER HINGE PIN	
S646	1	THREAD RELEASING PIN	
S647	2	CONNECTING LINK PIN A	
S648	1	CONNECTING LINK PIN B	
S649	3	HINGE PIN	
S650	1	HINGE PIN	
S651	1	SPREADER DRIVING PIN	
S652	1	FOOT LIFTING PIN	
S653	1	ECCENTRIC PIN	
S654	4	ARM BED KNOCK PIN	
S655	1	ARM BED KNOCK PIN	
S656	1	PIN FOR THREAD RELEASER	
S657	3	PIN	
S658	1	SPREADER SHAFT PIN	
S660	1	PRESSER SPRING PIN	
S661	1	FEED LIFTING ECCENTRIC	
S662	1	SPREADER DRIVING ECCENTRIC	
S663	3	FEED DRIVING ECCENTRIC	
S664	1	NEEDLE BAR DRIVING CRANK	
S665	1	LOOPER DRIVING CRANK	
S666	3	ECCENTRIC ADJUSTING DISC	
S667	3	FEED ECCENTRIC GUIDE	
S668	1	FEED ECCENTRIC BRACKET A	
S669	1	FEED ECCENTRIC BRACKET B	
S670	1	FEED ECCENTRIC BRACKET C	
S671	1	SPREADER DRIVING BALL	

ISSUED BY: JDF DATE: 20/9/863

PARTS LIST: 32291-2

MOD NO: ISSUE NO: 1

NO OF SHEETS: 6

TITLE: R.T.E.SEWING HEAD (SINGER PARTS) PARTS LIST: 32291-3

MACHINE TYPE ASSY DRG QTY  
RTE MK4 32290 1

NO OF SHEETS: 6

ISSUE NO: 1

PART NO	QTY	DESCRIPTION	REMARKS
S675	1	ARM SIDE COVER A	
S676	1	LIFTING SHAFT BRACKET	
S677	1	SPRING STOPPER	
S678	1	AIR CYLINDER	
S680	2	OIL CAP SPRING (LARGE)	
S681	1	OIL CAP SPRING (SMALL)	
S682	1	STUD SPRING B	
S683	1	THREAD RELEASING SPRING	
S684	1	LOOPER THREAD TENSION SPRING	
S685	1	NEEDLE THREAD TENSION SPRING	
S686	1	AIR CYLINDER SPRING	
S687	1	ADJUSTING SPRING A	
S688	1	ADJUSTING SPRING B	
S690	1	PRESSER LEVER SPRING	
S691	1	CRANK OIL HOLE COVER	
S692	1	FACE PLATE SPRING	
S695	1	PRESSER SPRING	
S696	2	SPRING FLANGE	
S697	1	OIL PAN	
S698	1	OIL PAN POST E	
S699	1	OIL PAN POST L	
S700	1	OIL POT	
S701	1	CUSHION RUBBER	
S703	3	SILICON OIL FELT	
S704	3	OILING FELT	
S705	2	TUBE CLAMP GASKET	
S706	1	OIL CONTROL ROD (BED)	
S707	1	OIL CONTROL ROD (ARM)	
S708	1	LUBRICATING PAD (WOOD)	
S709	1	AIR CYLINDER GASKET	
S710	1	WALKING FOOT	
S715	1	LOOPER HOLDER	
S716	1	SPREADER HOLDER	
S719	1	NEEDLE GUARD	
S721	1	HAND WHEEL	
S722	1	BELT PULLEY UPPER	
S723	1	BELT PULLEY LOWER	
S724	1	ARM SHAFT CONNECTING BELT	
S726	2	OILING FELT HOLDER	
S727	1	TENSION DISC BASE	
S728	1	NEEDLE THREAD RELEASING PLATE	
S729	1	BRACKET FOR CYLINDER PIN	
S730	1	FACE PLATE LOCK SPRING PLATE	
S733	1	SPRING BALL BRACKET	
S735	1	CYLINDER GASKET PLATE (LOWER)	

ISSUED BY: JDF DATE: 20/9/86

PARTS LIST: 32291-3

MOD NO: ISSUE NO: 1

NO OF SHEETS: 6



TITLE: R.T.E. SEWING HEAD (SINGER PARTS) PARTS LIST: 32291-4

MACHINE TYPE            ASSY DRG    QTY            NO OF SHEETS: 6  
RTE MK4                32290       1                ISSUE NO: 1

PART NO	QTY	DESCRIPTION	REMARKS
S736	1	CYLINDER GASKET PLATE (UPPER)	
S737	2	AIR CYLINDER LID	
S738	1	LOOPER THREAD TENSION BRACKET	
S739	1	NEEDLE THREAD TENSION RELEASER	
S740	1	NEEDLE THREAD TENSION BRACKET	
S741	1	HINGE	
S742	1	WASHER	
S743	1	WASHER FOR NEEDLE BAR DRIVE	
S744	2	WASHER FOR SPREADER ROD	
S745	2	WASHER FOR AIR CYLINDER	
S746	4	ARM BED SET WASHER	
S747	1	SPRING WASHER	
S748	1	REGULATING STUD CAP	
S749	1	NEEDLE THREAD TENSION RELEASER	
S750	6	FRICTION PLATE	
S752	5	COLLAR A	
S753	2	COLLAR B	
S754	1	COLLAR C	
S755	1	COLLAR	
S756	1	AIR CYLINDER BUSHING	
S757	1	BALL BEARING HOUSING	
S758	1	REGULATING STUD SLEEVE	
S759	1	FEED REGULATING STUD SOCKET	
S760	2	TUBE CLAMP	
S761	1	NEEDLE THREAD EYELET	
S762	2	NEEDLE THREAD GUIDE	
S763	1	NEEDLE THREAD GUIDE	
S764	1	NEEDLE BAR FRAME THREAD GUIDE	
S765	1	NEEDLE THREAD GUIDE	
S766	1	LOOPER THREAD GUIDE SET	
S767	1	LOOPER THREAD TUBE	
S768	1	LOOPER THREAD GUIDE	
S769	1	LOOPER THREAD TAKE UP ROD	
S770	1	LOOPER THREAD GUIDE	*
S771	2	TENSION DISC	
S772	1	SCREW	
S773	1	CYLINDER NOZZLE	
S774	1	LOOPER THREAD TENSION STUD	
S775	1	LOOPER THREAD TENSION STUD	
S776	2	OIL STOP BALL SCREW	
S778	1	SOCKET FOR OIL TANK	
S779	1	SCREW	
S780	1	SCREW	
S781	1	SPRING STOPPER	
S784	1	TENSION THUMB NUT	
S785	1	4 DIA E-RING	

ISSUED BY: JDF            DATE: 20/9/86            PARTS LIST: 32291-4  
MOD NO:                    ISSUE NO: 1                NO OF SHEETS: 6

TITLE: R.T.E. SEWING HEAD (SINGER PARTS) PARTS LIST: 32291-5

MACHINE TYPE            ASSY DRG        QTY  
RTE MK4                32590            1

NO OF SHEETS: 6

ISSUE NO: 1

PART NO	QTY	DESCRIPTION	REMARKS
8786	1	9 DIA E-RING	
8787	1	BALL FOR PRESSER SPRING	
8788	3	OIL STOP BALL	
8789	1	PIN	
8790	1	SPREADER BAR BRACKET	
8791	1	SPREADER DRIVE CRANK	
8792	1	NEEDLE BAR FRAME A	
8793	1	NEEDLE BAR CONNECTING STUD	
8797	2	NEEDLE BEARING B66	
8798	3	NEEDLE BEARING B610	
8799	4	NEEDLE BEARING BH68	
8800	2	NEEDLE BEARING BH78	
8801	6	NEEDLE BEARING B78	
8802	2	NEEDLE BEARING B108	
8803	1	NEEDLE BEARING B168	
8804	3	NEEDLE BEARING B-188	
8805	2	ARM SHAFT BEARING (REAR)	
8806	1	ARM SHAFT BEARING (FRONT)	
8808	1	SCREW	
8810	2	SCREW	
8811	2	SCREW —	
8812	1	SCREW	
8813	1	SCREW	
8814	1	SCREW	
8815	5	SCREW FOR FLANGE	
8816	2	SCREW	
8817	1	SCREW	
8819	2	SCREW	
8820	1	SCREW	
8821	2	SCREW	
8823	2	SCREW	
8824	1	SCREW	
8825	1	SCREW	
8826	3	SCREW	
8827	1	SCREW FOR CRANK	
8828	1	SCREW	
8829	2	SCREW	
8830	2	SCREW FOR TIMING PULLEY	
8831	2	SCREW	
8832	1	SCREW	
8833	1	SCREW	
8836	3	SCREW	
8837	3	SCREW	
8838		SCREW	
8839	7	SCREW	
8840	4	SCREW	

ISSUED BY: JDF            DATE: 20/9/86

PARTS LIST: 32291-5

MOD NO:                    ISSUE NO: 1

NO OF SHEETS: 6

TITLE: R.T.E. SEWING HEAD (SINGER PARTS) PARTS LIST: 32291-6

MACHINE TYPE  
RTE MK4

ASSY DRG QTY  
32290 1

NO OF SHEETS: 6

ISSUE NO: 1

PART NO	QTY	DESCRIPTION	REMARKS
S841	1	NUT	
S842	1	NUT FOR TENSION	
S843	1	BUSHING FOR TENSION	
S844	1	TENSION RATCHET	
S845	2	TENSION DISC	
S847		NUT	
S848	4	LIFTER ROLLER	
S849	2	SPACING WASHER	
S850	1	WASHER	
S851	1	WASHER	
S854	1	NUT	
S855	1	NUT	
S856	6	NUT	
S857	2	NUT	
S858	1	SCREW	
S860	1	SCREW	
S861	2	SCREW	
S863	12	SCREW	
S864	5	SCREW	
S865	5	SKT HD CAP SCREW	
S866	5	SCREW	
S867	3	SCREW	
S868	12	SCREW	
S869	1	SCREW	
S870	1	HEX HD SCREW	
S871	2	SCREW	
S872	4	SKT HD CAP SCREW	
S874	1	HEX HD SCREW	
S875	1	SCREW	
S876	2	SCREW	
S879	1	SKT HD CAP SCREW	
S880	2	SCREW	
S881	1	WASHER	
S882	1	SCREW	
S883		OIL FELT	

ISSUED BY: JDF

DATE: 20/9/86

PARTS LIST: 32291-6

MOD NO:

ISSUE NO: 1

NO OF SHEETS: 6

REGISTER FOR: SINGER, NEWLONG, KANSAI SEWING HD PARTS

FROM: S/K900  
TO: S/K949

A&H NO	DESCRIPTION: SINGER & NEWLONG/KANSAI	S PART NO	N/K PART NO	CO
S/K900	REL LCH STUD SCREW	270078(803)		NO
S/K901	ANTI REV COMPLETE	22970		YES
S 902	NEEDLE BAR	415041		
S 903	LFB GUIDE BLOCK	415059		
S 904	LFB PINCH SCREW	414638		
S 905	FOOT LIFT. SCREW	414520		
S 906	FOOT LIFT. SCREW	544204-001		
S 907	LT CRANK PINCH SCW	414511		
S 908	FACE PLATE SCREW	545174-452		
S 909	NEEDLE SET SCREW	414519		
S 910	CLAMP STUD NUT	541198		
S 911	CLAMP STUD NUT	415292		
S 912	LOOPER HOLD SCREW	414558		
S 913	BASE PLATE SCREW	414508		
S 914	BLOCK ADJ SCREW	414516		
S 915	BLOCK PINCH SCREW	414512		
S 916	FACE PLATE	415014		
S 917	LOOPER THREAD TENSION COMPLETE	<b>415294</b>		
S 918	FOOT LIFTER LEVER	267613		
S 919	FEED BAR SPRING	203941		
		267614		
		414571		

**SPECIAL NOTE**  
**on**  
**ELECTRICAL TESTING OF MACHINES**

The machine covered by this Instruction Manual has been tested to ensure it conforms to the standard BS2771, Part 1: Electrical Equipment of Industrial Machines (EN 60204: Part 1).

Some of the tests may have involved the isolation of certain parts of the electrical circuit to prevent damage.

Because of this, customers who wish to repeat the tests should first contact their local USM-Texon representative, for information on any precautions that may be necessary to ensure certain electrical components are protected during testing.

REGISTER FOR: SINGER, NEWLONG, KANGAI SEWING HD PARTS

FROM: S/K194

TO: S/K249

A/H NO	DESCRIPTION: SINGER & NEWLONG/KANGAI	S PART NO	N/K PART NO	COM
S/K194	THREAD GUIDE	LOOPER TENS GUIDE 268333	34-152	NO
S/K195	LOOPR THRD GUIDE	LOOPR THRD GUIDE 268505	34-150	YES
S/K222	VIBR PRESSBAR	WALKING FOOT SHANK 267657	32-007	YES
S/K223	LIFT PRESSBAR	FOOT SHANK 267628	32-008	YES
S/K224	NEEDLEBAR	NEEDLEBAR 268603	32-006	NO
S/K225	VIBR PRESS FOOT	A & H MANUF 267659		---
S/K226	LOOPER	LOOPER 268380	33-501	YES
S/K227	LPB GUIDE BLOCK	PRESSER FOOT GUIDE 267629	32-105	NO
S/K228	LPB PINCH SCREW	SCREW 200078	83-054	NO
S/K229	FOOT LFT SCREW	SCREW 200058	84-763	NO
S/K230	FOOT LFT SCREW	SCREW 200373	84-712	NO
S/K231	LFLINK HINGE SCREW	SCREW 200167	84-111	NO
S/K232	LFCRANK PINCH SCR	SCREW 200061	83-050	NO
S/K233	FOOT LHINGE SCREW	LIFTER LEVER PIN 201363(803)	32-302	YES
S/K234	FACE PLATE SCREW	SCREW 201416	84-111	NO
S/K235	NEEDLE SET SCREW	SCREW 200125/200	83-025	NO
S/K236	CLAMP STUD NUT	NUT 205248	83-975	NO
S/K237	CLAMP STUD <del>NUT</del>	SCREW 268308	83-156	NO
S/K238	NEEDLE GUARD SCREW	SCREW 141478	83-475	YES
S/K239	NEEDLE GUARD SCREW	SCREW 141494	83-476	YES
S/K240	LOOPR HOLD SCREW	SCREW 350478	84-261	NO
S/K241	BASE PLATE SCREW	SCREW FOR BASE COV 200053	83-100	NO
S/K242	BLOCK ADJ SCREW	SCREW 200085	84-164	NO
S/K243	BLOCK PINCH SCREW	SCREW 200066	84-367	NO
S/K244	FACE PLATE	HEAD COVER A 267607	32-626	NO
S/K245	FACE PLT LOCK STUD	HEAD COVER PIN 268033	32-205	YES
S/K246	<del>SPREADER HOLDER SET SCREW</del>	200380(810)	-	
S/K247	<del>FEED DOG SHANK SCREW</del>	141495	-	
S/K248	<del>" " " " NUT</del>	202525	-	
S/K249	NEEDLE 35004	4112-160-23	-	

REGISTER FOR: SINGER, NEWLONG, KANSAI SEWING HD PARTS

FROM: S/K250  
TO: S/K299

A&H NO	DESCRIPTION; SINGER & NEWLONG/KANSAI	S PART NO	N/K PART NO	COM
S/K250	-	225388	-	
S/K251	-	97774	-	
S/K252	-	259658	-	
S/K253	-	255540	-	
S/K254	TWEEZERS	120 341	-	
S/K255	SEWING HEAD	56300V	-	
S/K256	THUMB SCREW	051224	-	
S/K257	SCREW	109370	-	
S/K258	7/8" TAPE BINDER	40452-24-6	-	
S/K259	NEEDLE BAR	268603	-	
S/K260	TAKE UP LEVER	97689	-	
S/K261	-	103104	-	
S/K262	SCREW	200089	-	
S/K263	LOOPER CAR CRANK	268307	-	
S/K264	2 5/8" M/C PULLEY	976694	-	
S/K265	SPREADER POINT	268162	-	
S/K266	SPREADER	268683	-	
S/K267	ARM SHAFT BUSHING	97923	-	
S/K268	ARM SHAFT BUSHING	97925	-	
S/K269	SCREW	109552	-	
S/K270	RETAINER	103007	-	
S/K271	LPR. CAR. CRANK PIN	268208	-	
S/K272	- PADDING LOCK FOR FEED LIFT CONV	-268253	-	
S/K273	-	247648	-	
S/K274	-	268063	-	
S/K275	-	268094	-	
S/K276	LIFT. ECCENTRIC CON	268493	-	
S/K277	N/BAR ROCK FRAME	267639	-	
S/K278	7/8" SINKING HOUSING ASSY	215106	-	
S/K279	-	-	-	
S/N280	-	L.P.B. DRIVE & ECC	-	N22 & N54 ASS
S/K281	COTTON BASE	625092	-	
S/K282	- (Cotton base for 1300 1300 1300)	201185	-	300
S/K283	-	-	-	
S/K284	-	-	-	
S/K285	-	-	-	
S/K286	-	-	-	
S/K287	-	-	-	
S/K288	-	-	-	
S/K289	-	-	-	
S/K290	NEEDLE SIZE 29/300 (SMALL EYE)	5022/29/300	-	
S/K291	NEEDLE SIZE 22/140	5021/22/140	-	
S 292	" " 23/160	5021/23/160	-	
S 293	" " 21/130	-	-	
S 294	" " 26/230	-	-	
S 295	" " 27/250	5021 - 01 2147	-	
S 296	" " 25/200 [5011-01-200/25]	-	-	

ASH NO	DESCRIPTION: SINGER & NEWLONG/KANSAI	S PART NO	N/K PART NO	COM	
S/K600					
S/K601					
S/K602					
S/K603					
S/K604					
S/K605	ARM SHAFT	UPPER MAIN SHAFT	415128	32-000	YES
S/K606	BED SHAFT	LOWER MAIN SHAFT	415145	32-001	YES
S/K607	LOOPER SHFT BUSH L	LOOPER SHFT BUSH F	415168	32-002	YES
S/K608	LOOPER SHFT BUSH R	LOOPER SHFT BUSH R	415170	32-003	YES
S/K609	LOOPER CARR SHAFT	LOOPER SHAFT	268093	32-004	NO
S/K610	FEED BAR HINGE PIN	FEED BAR HINGE PIN	268035	32-005	NO
S/K611	LIFTING ROCK SHAFT	FOOT LIFTING SHAFT	267633	32-009	YES
S/K612	LIFTING PRESSERBAR	PR/FOOT GUIDE BAR	267907	32-010	YES
S/K613	SPREADER DRIV SHFT	SPREDER DRIVING SFT	415192	32-011	NO
S/K614	SPREADER BAR	SPREADER BAR	268499	32-012	YES
S/K615	FEED LFT RK SHAFT	FEED LIFTING SHAFT	267933	32-013	YES
S/K616	FEED DRV RK SHAFT	FEED DRIVING SHAFT	268070	32-014	NO
S/K617	PRESS CYL PLUNGER	AIR CYL SHAFT	415119	32-015	1 YES
S/K618	LOOPR THRW OUT ROD	LOOPR THRW OUT SFT	415179	? 32-016	---
S/K619	NBAR CONN LINK	N/BAR CRANK ROD	268055	268056 32-100	3 YES
S/K620	FEED LIFTING CONN	FEED LIFTING ROD	268074	32-101	YES
S/K621	LIFTING CRANK	FOOT LIFTING LEVER	415061	32-102	4 YES
S/K622	LFT RK SHAFT CRANK	FOOT LFTNG SFT LVR	32788	32-103	5 YES
S/K623	LIFTING LINK	FOOT LIFTING LINK	267627	32-104	YES
S/K624	LFT ECC CONN CRANK	LIFTNG SHAFT LEVER	415069	32-106	YES
S/K625	LOOPR DRIV CONN	LOOPER DRIVING ROD	268098	32-107	YES
S/K626	FEED LIFTING LINK	FEED LIFTING LINK	268078	32-108	YES
S/K627	FEED LIFTING CRANK	FEED LIFTING LEVER	415204	32-109	YES
S/K628	FEED DRV CONN	DRIVING ROD	268098	32-110	NO
S/K629	FOOT LIFTING CRANK	FOOT LIFTR DRK LVR	267612	32-111	YES
S/K630	FOOT LIFTING ARM	FOOT LIFTING ARM	415120	32-112	NO
S/K631	FOOT LIFTING LEVER	FOOT LIFTING LEVER	415104	32-113	YES
S/K632	FOOT LIFTING ROD	FOOT LIFTING ROD	267615	32-114	NO
S/K633	LIFTING ECC CONN	LIFTNG SHFT DR ROD	268490/2	32-115	7 NO
S/K634	SPREADER DRIV CONN	SPREADER DRIVE ROD	415183	32-116	NO
S/K635	FEED DRIVING CRANK	FEED DR SHFT LEVER	415213	32-117	YES
S/K636	FEED LIFTING CRANK	FEED LEVER	415206	32-118	YES
S/K637	LOOP CARRIER CRANK	LOOPER DRIVE LEVER	415174	32-119	YES
S/K638	NBAR RK DRIVINGARM	N/BAR DRIVE LEVER	415094	32-120	10 YES
S/K639	LIFTING LEVER	WALKNG FOOT LIFT- - LEVER 267625 (3000)	415067	32-121	8 NO
S/K640	LIFTING CRANK	FOOT LIFTING LEVER	267631	32-122	9 NO
S/K641	PBAR CYL SUPPORT	AIR CYL PIN	267714	32-200	YES
S/K642	NBAR FRAME RG STUD	STITCH ADJ STUD	268148	32-201	YES
S/K643	LLEVER HINGE STUD	DRIVING LEVER PIN	267626	32-202	YES
S/K644	FEED REG STUD	FEED ADJ STUD	268081	32-204	YES
S/K645	FACEPLATE STUD	HEAD COVER HNG PIN	268330	32-206	NO
S/K646	THREADTENS REL PIN	THRD RELEASING PIN	226206	32-207	NO
S/K647	LINK HINGE PIN	CONN LINK PIN A	267617	32-225	4 NO
S/K648	LIFT ECC CONN PIN	CONN LINK PIN B	267617	32-226	YES
S/K649	FEED LFT LINK PIN	HINGE PIN	268079	32-227	YES



A&H NO	DESCRIPTION: SINGER & NEWLONG/KANSAI	S PART NO	N/K PART NO	COM
S/K650	LPR CARR HINGE PIN	HINGE PIN	32-228	YES
S/K651	SPREADER DRIV PIN	SPREADER DRIVE PIN	268190 32-229	YES
S/K652	VIBR PBAR HNG STUD	FOOT LIFTING PIN	267658 32-230	NO
S/K653	SPR DRIV ECC PIN	ECCENTRIC PIN	543808-002 32-282	NO
S/K654	ARM POSITION PIN	ARM BED KNOCK PIN	415295 32-290	YES
S/K655		ARM BED KNOCK PIN	32-291	
S/K656	TENSION REL PIN	PIN - THREAD REL	543850-001 32-293	YES
S/K657	FEED DRV CONN STUD	PIN	415092 32-300	NO
S/K658	SPR DRV SCREW STUD	SPREADER SHAFT PIN	414525 32-301	NO
S/K659		GEAR LOCK PLUNGER	32-303	---
S/K660	PBAR SPARM SCREW	PRESSER SPRING PIN	414567 32-304	NO
S/K661	FEED LFT ECC	FEED LIFT ECC	415210 32-400	YES
S/K662	SPR DRIV ECCENTRIC	SPREADER DRIVE ECC	415187 32-401	NO
S/K663	FEED DRIVING ECC	FEED DRIVE ECC	267610 32-402	YES
S/K664	NBAR CRANK	N/BAR DRIVE CRANK	415133 32-420	YES
S/K665	LOOPR DRIV CRANK	LOOPER DRIVE CRANK	415176 32-421	YES
S/K666	FEED ADJ DISC	ECC ADJ DISC	268065 32-475	YES
S/K667	FEED FRICTN PLATE	FEED ECC GUIDE	267623 32-476	YES
S/K668	FEED DRIV FLANGE	FEED ECC BRACKET A	415074 32-477	YES
S/K669	ROCK FRM DRIV ECC	FEED ECC BRACKET B	415079 32-478	11 NO
S/K670	LIFTING ECCENTRIC	FEED ECC BRACKET C	415077 32-479	11 NO
S/K671	SPR ROCK-S ROLLER	SPREDER DRIVE BALL	351876 32-490	YES
S/K672	-----	BED PLATE A	----- 32-600	---
S/K673	BED PLATE	BED PLATE B	415035 32-601	NO
S/K674	-----	BED PLATE SLIDE A	----- 32-602	---
S/K675	ARM SIDE COVER	ARM SIDE COVER A	267604 32-625	NO
S/K676	LIFT ROCK-S BRKT	LIFTING SHAFT BRKT	415071 32-650	NO
S/K677	PBAR S-ARM FULCRUM	SPRING STOPPER	267646 32-651	YES
S/K678	PBAR PRESSURE CYL	AIR CYLINDER	415117 32-652	YES
S/K679	-----	LOOPER SET PIN SP	----- 32-806	---
S/K680	BED STOP SPRING	OIL CAP SPRING LGE	268044 32-807	NO
S/K681	ARMSFT STOP SPRING	OIL CAP SPRING SML	268009 32-808	YES
S/K682	REG STUD SPRING	STUD SPRING B	214529 32-810	YES
S/K683	T-TENS REL SPRING	THREAD REL SPRING	204365 32-811	YES
S/K684	LOOP T-TENS SPRING	LOOPER THRD TEN SP	10148 32-812	YES
S/K685	NEED T-TENS SPRING	NEEDLE THRD TEN SP	131741 32-815	YES
S/K686	PBAR SPRING	AIR CYL SPRING	267716 32-820	YES
S/K687	FEED ADJ DISC SPR	ADJ DISC SPRING A	268066 32-825	YES
S/K688	L-ECC ADJ DISC SPR	ADJ DISC SPRING B	267618 32-826	YES
S/K689	-----	SAFETY LATCH SPRNG	----- 32-850	---
S/K690	FOOT L-LEVER SPR	PRESSER LEVER SP	204348 32-851	YES
S/K691	CRANK HOLE COVER	CRANK OIL HOLE -	268102 32-875	NO
"		- COVER		
S/K692	FACE PLATE SPRING	FACE PLATE SPRING	268032 32-876	YES
S/K693	-----	SLIDE PLT SP -SIDE	----- 32-877	---
S/K694	-----	SLIDE PLT SP-FRONT	----- 32-878	---
S/K695		PRESSER SPRING <sup>3/16</sup> 1/2"	267738 32-879	
S/K696	PULLEY SPR FLANGE	SPRING FLANGE	202253 32-895	YES
S/K697	-----	OIL PAN	----- 32-900	---
S/K698	-----	OIL PAN POST F	----- 32-901	---
S/K699	-----	OIL PAN POST L	----- 32-902	---

REGISTER FOR: SINGER, NEWLONG, KANSAI SEWING HD PARTS  
3000

FROM: S/K700  
TO: S/K749

A&H NO	DESCRIPTION: SINGER & NEWLONG/KANSAI	PART NO	N/K PART NO	COM
S/K700	----- OIL POT	-----	32-903	---
S/K701	----- CUSHION RUBBER	-----	32-904	---
S/K702	----- SILICON OIL POT	-----	32-910	---
S/K703	----- SILICON OIL FELT	-----	32-915	---
S/K704	NBAR OILING FELT	OILING FELT 268144	32-916	YES
S/K705	LOOPR GUIDE GASKT	TUBE CLAMP GASKET 268500	32-950	12 NO
S/K706		OIL CONTRL ROD-BED	32-960	
S/K707		OIL CONTRL ROD-ARM	32-961	
S/K708	LUBRICATING PAD	LUB/ING PAD (WOOD) 268077	32-962	YES
S/K709	CYL PLUNGER WASHER	AIR CYL GASKET 267712	32-970	YES
S/K710	VIBRATG PRESS FOOT	WALKING FOOT 267659	33-000	YES
S/K711	=====	STATIONARY FOOT	33-001	===
S/K712	=====	FEED DOG	33-100	===
S/K713	=====	NEEDLE PLATE	33-301	===
S/K714	SPREADER	SPREADER SET 268638	33-400	YES
S/K715	LOOPER HOLDER	LOOPER HOLDER <del>268602</del> 417056	33-500	YES
S/K716	SPREADER HOLDER	SPREADER HOLDER 415196	33-590	YES
S/K717	=====	FEED DOG SHANK	33-591	===
S/K718	LOOP DEFLECTOR	NEEDLE GUARD 267665	33-595	4300 33-595
S/K719	NEEDLE GUARD	NEEDLE GUARD 268310	33-596	YES
S/K720	-----	LOOPER THRW OUT BR	33-600	---
S/K721	MACHINE PULLEY	HAND WHEEL 415154	33-700	YES
S/K722	A-SFT BELT PULLEY	BELT PULLEY UPPER 415157	33-701	YES
S/K723	B-SFT BELT PULLEY	BELT PULLEY LOWER 415160	33-702	YES
S/K724	A-SFT CONN BELT	ARM SHAFT CON BELT 268270	33-703	YES
S/K725	-----	GEAR LOCKING PLU -	33-800	---
"		- NGER HANDLE		
S/K726	NBAR FELT HOLDER	OILING FELT HOLDER 268278	33-801	NO
S/K727	T-TENS REL DISC	TEN'N DISC BASE 32572	33-802	NO
S/K728	T-TENS REL PLATE	NEEDLE THREAD REL- 268171	33-803	YES
"		- PLATE		
S/K729	CYL SUPP RETAINER	BRKT - CYL PIN 267650	33-805	YES
S/K730	F-PLATE SPR PLATE	FACE FLT LOCK- 415016	33-806	NO
"		- SPRING PLATE		
S/K731	-----	SAFETY LATCH -	33-807	---
"		SPRING BRACKET		
S/K732	-----	BUSHING POS PLATE	33-808	---
S/K733	PBAR BB RETAINER	SPRING BALL BRKT 267718	33-809	YES
S/K734	-----	LOOPER THRW OUT-	33-810	---
"		-SAFETY LATCH		
S/K735	CYL PLUNGER DISC	CYL GASKET FLT-LOW 267711	33-811	YES
S/K736	CYL PLUNGER WASHER	CYL GASKET FLT UP 267713	33-812	YES
S/K737	CYLINDER CAP	AIR CYL LID 267709	33-813	YES
S/K738	LOOPR T-TENS BRKT	LOOPER THRD TEN BK 415255	33-814	NO
S/K739	T-TENS RELEASER	NEEDLE THD TEN REL 415357	33-815	NO
S/K740	T-TENS BRKT	NEEDLE THD TEN BKT 268167	33-816	YES
S/K741		HINGE	33-818	
S/K742	FEED DOG SC WASHER	WASHER 543804-004	33-900	NO
S/K743	NBAR CONN L WASHER	WASHER-N/BAR DRIVE 268139	33-901	NO
S/K744	SPR DRIV ECC WASHR	WASHER-SPREDER ROD 268220	33-902	NO
S/K745	PBAR HINGE S WASHR	WASHER-AIR CYL 548154	33-915	1 YES
S/K746	ARM SCREW WASHER	ARM BED SET WASHER 543804-007	33-920	YES
S/K747	SPRING WASHER	SPRING WASHER 548459	33-930	2 NO
S/K748	REG STUD CAP	REG STUD CAP 415099	33-940	YES
S/K749	T-TENS REL CAP	NEEDL THD TEN REL 415252	33-941	YES

8/K770	DEBRIDATION BIT W/SP	W/SP END, KAR-BIT	415187	30-942	NO
8/K771	PACKING (BRASS)	FRICTION PLATE	24754	30-942	YES
8/K772	ROCK SHAFT COLLAR	COLLAR-A	415188	30-951	NO
8/K773	L-ROCK FR COLLAR	COLLAR B	415189	30-952	YES
8/K774	ADJ DISC COLLAR	COLLAR C	415191	30-953	YES
8/K775	DR-ROCK COUNTERBAL	COLLAR	415190	30-954	NO
8/K776	CYL PLUNG SUSHING	ATR CYL SUSHING	267283	30-990	YES
8/K777	A-SET BB HOUSING	BALL BEARING HOUSING	268004	34-000	YES
8/K778	REG STUD SLEEVE	REG STUD SLEEVE	268149	34-011	YES
8/K779	REG STUD SOCKET	FRED REG STUD SKT	268082	34-012	YES
8/K780		TUBE CLAMP	415342	34-013	NO
8/K781	N-THREAD GUIDE	NEEDL THRED EYELET	84277	34-100	YES
8/K782	N-THREAD GUIDE	NEEDL THRED GUIDE	268513	34-101	YES
8/K783	N-THREAD GUIDE	NEEDL THRED GUIDE	268312	34-102	YES
8/K784	ROCK FR THR GUIDE	N/BAR FLAME THD GD	268219	34-103	YES
8/K785	NEEDLE THRD GUIDE	NEEDLE THRED GUIDE	268512	34-104	YES
8/K786	LOOPR THRD GUIDE	LOOPER THRD GD PET	265111	33-517	YES
8/K787	LOOPR THRD TUBE	LOOPER THREAD TUBE	268123	34-151	YES
8/K788	LOOPR THRD GUIDE	LOOPER THRED GUIDE	268051	34-153	YES
8/K789	LOOPR TAKE UP ROD	LOOPER THREAD-	268052	35-154	YES
8/K790		-TK/UP ROD			
8/K791		LOOPER THRED GUIDE	268052	34-155	---
8/K792	LOOPR TENSION DISC	TENSION DISC	412203	34-156	NO
8/K793	L-LEVER SPR EYE	SCREW	414570	34-200	NO
8/K794	CYL HOSE CONN	CYL NOZZLE	794778	34-201	YES
8/K795	N-THRD TENS STUD	LOOPR THD TEN STUD	50326-	34-202	YES
8/K796	L-DTHRD TENS STUD	LOOPR THD TEN STUD	415291	34-203	NO
8/K797	OILSTOP BALL SCREW	OIL STOP BALL SCRW	414578	34-204	YES
8/K798		LOOPER SET PIN		34-205	---
8/K799		SOCKET - OIL TANK		34-206	---
8/K800	L-LEVER SPR SCREW	SCREW	544336	34-207	NO
8/K801	L-CRANK STOP SCREW	SCREW	414566	34-208	NO
8/K802		SPRING STOPPER	415113	34-250	
8/K803		LOCK PLNGR THB NUT		34-251	---
8/K804		THUMB NUT		34-252	---
8/K805	THRDTENS THUMB NUT	TEN'N THUMB NUT	541452	34-253	YES
8/K806	STUD RETAIN SPRING	4 DIA E-RING	240245	34-320	YES
8/K807		9 DIA E-RING		34-321	---
8/K808	PBAR SARM BALLBRG	BALL-PPRESSER SPRNG	276025	34-350	YES
8/K809	OIL STOP BALL	OIL STOP BALL	268214	34-351	YES
8/K810	F-LIFT COTTER PIN	PIN	248423	EX-09069	YES
8/K811	SPREADER BAR BRKT	SPREADER BAR BRKT	268184	34-700	YES
8/K812	SPREADR DRIV CRANK	SPREDER DRIVE CRNK	415194	34-701	YES
8/K813	NBAR ROCK FRAME	N/BAR FLAME -A	415045	34-710	YES
8/K814	NBAR CONN STUD	N/BAR CONN STUD	415053	34-711	YES
8/K815		FEED DRIVING FLAME		34-721	---
8/K816	FEED BAR	FEED BAR SET	415198	34-720	NO
8/K817	LOOPER CARRIER	LOOPER CARRIER	268367	34-730	NO
8/K818	NEEDLE BEARING	NEEDLE BEARING 846	267093	34-801	13 NO
8/K819	L-CARR NEEDLE BRG	NEEDL BEARING	268099	34-802	NO
8/K820	NEEDLE BEARING	NEEDL BEARING 8H48	270966	34-803	NO

ASH NO	DESCRIPTION: SINGER & NEWLONG/KANGAI	S PART NO	N/K PART NO	COM
S/K800	NEEDLE BEARING	NEEDL BEARING BHTS 267110	34-804	NO
S/K801	SHAFT NEEDLE BRG	NEEDL BEARING B78 268071	34-805	NO
S/K802	NEEDLE BEARING	NEEDL BEARING B108 268029	34-806	NO
S/K803	SPR DRIV CONN BRG	NEEDL BEARING S168 415368	34-807	NO
S/K804	DRIV CONN BEARING	NEEDL BEARING B188 271055	34-808	NO
S/K805	ARM SHAFT BALL BRG	ARM SHFT BEARNG -R 272142	34-825	14 YES
S/K806	ARM SHAFT BALL BRG	ARM SHFT BEARNG -F 32848	34-826	YES
S/K807		SCREW	84-161	
S/K808	HINGE PINCH SCREW	SCREW 414543	83-001	YES
S/K809	-----	SCREW -----	83-051	---
S/K810	L-THRD GUIDE SCREW	SCREW 414537	83-052	NO
S/K811	N-THRD GUIDE SCREW	SCREW 414514	83-053	YES
S/K812	L-DRIV CRANK SCREW	SCREW 545103	83-055	NO
S/K813	SCREW	SCREW 141338	83-056	NO
S/K814	L-HOLE COVER SCREW	SCREW 414563	83-026	NO
S/K815	SCREW	SCREW FOR FLANGE 544336	83-075	YES
S/K816	L-PRESS SET SCREW	SCREW 544301	83-076	YES
S/K817		SCREW (with set)	83-077	
S/K818	-----	SCREW -----	83-078	---
S/K819	-----	SCREW -----	83-079	---
S/K820	NBAR CAP WSH SCREW	SCREW 414517	83-080	NO
S/K821	CAP SCREW	SCREW 545297	83-081	YES
S/K822	-----	SCREW -----	83-101	---
S/K823	SPR BRACKET SCREW	SCREW 414524	83-102	NO
S/K824	DRIVCRANK SETSCREW	SCREW 544204-001	83-125	NO
S/K825	L-ROD HINGE SCREW	SCREW 414577	83-126	NO
S/K826	CRANK PINCH SCREW	SCREW 414501	83-150	2 NO
S/K827	NBAR CR SET SCREW	SCREW FOR CRANK 500272-833	83-151	NO
S/K828	CR POSITION SCREW	SCREW 549024	83-152	NO
S/K829	BLTPULLEY SETSCREW	SCREW 414546	83-153	NO
S/K830	BLTPULLEY SETSCREW	SCREW-TIMING PULLY 414546	83-154	NO
S/K831	D-ARM PINCH SCREW	SCREW 545136-452	83-155	YES
S/K832	CYL SUPPORT STUD	SCREW 350579 (819)	83-157	NO
S/K833	PULLEY POSN SCREW	SCREW 414526	83-158	NO
S/K834	L-BUSH POSN SCREW	SCREW 549024	83-159	NO
S/K835	L-BUSH SET SCREW	SCREW 500264-833	83-160	NO
S/K836	DRIV FLANGE SCREW	SCREW 414555	83-175	NO
S/K837	DRIV FLANGE SCREW	SCREW 414555	83-176	YES
S/K838		SCREW	83-200	
S/K839	ARM BRACKET SCREW	SCREW 414504	83-201	NO
S/K840	ARM SCREW	SCREW 415361	83-225	YES
S/K841	ROCK SFT STUD NUT	NUT 545424	83-976	NO
S/K842	T-TENS THUMB NUT	NUT FOR TENSION 51570	41-101	NO
S/K843	T-TENS SPR BUSHING	BUSH FOR TENSION 59538	41-107	NO
S/K844	T-TENS SPR BUSHING	TENSION RATCHET 143657	41-105	NO
S/K845	TENSION DISC	TENSION DISC 2102	41-111	YES
S/K846		KS MARK	24-001	
S/K847		NUT	93-101	
S/K848	T-TENS SF COLLAR	LIFTER ROLLER 268121	75-211	YES
S/K849	SPACING WASHER	SPACING WASHER 543804-004	75-459	YES

AMH NO	DESCRIPTION: SINGER & NEWLONG/KANSAI	S PART NO	N/K PART NO	COM
5/K850	SPR SCREW WASHER	WASHER 547670	75-455	YES
5/K851	WASHER	WASHER 548154	75-446	NO
5/K852	-----	PIN -----	32-290	---
5/K853	-----	NUT -----	86-211	---
5/K854	-----	NUT -----	86-413	---
5/K855	ROD HINGE SC NUT	NUT 541166-003	86-411	NO
5/K856	HINGE STUD NUT	NUT 541197	86-501	21 NO
5/K857	CYL PLUNGER NUT	NUT 545476	86-761	YES
5/K858	RK FR TGUIDE SCREW	SCREW 414539	84-161	NO
5/K859	SCREW	SCREW 414548	84-162	YES
5/K860	SCREW	SCREW 414522	84-163	YES
5/K861	-----	SCREW -----	84-171	---
5/K862	-----	SCREW -----	84-313	---
5/K863	SCREW	SCREW 504020	84-511	NO
5/K864	FRICPLATE SETSCREW	SCREW 414557	84-512	YES
5/K865	ECCENTRIC SETSCREW	ALLEN KEY SCREW 544204-001	84-521	NO
5/K866	REG STUD SKT SCREW	SCREW 545249-452	84-571	YES
5/K867	SP COLLAR SETSCREW	SCREW 414529	84-515	YES
5/K868	FRICPLATE SCREW	SCREW <i>NEW No 374038</i> 544286	84-572	NO
5/K869	FACEPLT SPRING SCREW	SCREW 414534	84-664	NO
5/K870	SPREADER SCREW	HEX HEAD SCREW 414552	84-611	YES
5/K871	SPR CRANK SETSCREW	SCREW 544204-001	84-715	NO
5/K872	RK SHFT POSN SCREW	ALLEN KEY SCREW 414549	84-719	NO
5/K873	-----	SCREW -----	84-721	---
5/K874	-----	HEX HEAD SCREW -----	84-812	NO
5/K875	DRIV CR STOP SCREW	SCREW 414536	84-862	NO
5/K876	ADJ DISC CDL SCREW	SCREW 544325	85-111	NO
5/K877	-----	SCREW -----	85-112	---
5/K878	-----	SCREW -----	85-131	---
5/K879	PULLEY SETSCREW	ALLEN KEY SCREW 414525	85-114	NO
5/K880	-----	SCREW -----	84-167	---
5/K881	CRANK CLAMP WASHER	WASHER 548459	75-381	YES
5/K882	CYL CAP SCREW	SCREW 545156	85-182	NO
5/K883	-----	OIL FELT -----		
5/K884	-----	COTTON STAND ASSY -----		
5/K885	ANTI REV MECH COMP	22988		YES
5/K886	ANTI REV CLUTCH	22982		YES
5/K887	BUSHING	22983		
5/K888	BUSHING SETSCREW	200346 (830)		
5/K889	CLUTCH HOUSING	22984		
5/K890	CL HOUSING+22982	22985		
5/K891	CLUTCH RET WASHER	22986		
5/K892	RETAIN WASHER RET	22987		
5/K893	REL LATCH COMPLETE	22990		YES
5/K894	REL LATCH	22989		NO
5/K895	REL LCH HINGE PIN	204648		NO
5/K896	REL LATCH STUD	268416		NO
5/K897	REL LATCH STUD PIN	208127		NO
5/K898	REL LATCH STUD SKT	268418		NO
5/K899	REL LCHSTUD SPRING	270026		NO

REGISTER FOR: SINGER, NEWLONG, KANSAI SEWING HD PARTS

FROM: S/K900  
TO: S/K949

A&H NO	DESCRIPTION: SINGER & NEWLONG/KANSAI	S PART NO	N/K PART NO	COM
S/K900	REL LCH STUD SCREW	270078(803)		NO
S/K901	ANTI REV COMPLETE	22970		YES
S 902	NEEDLE BAR	415041		
S 903	LPB GUIDE BLOCK	415059		
S 904	LPB PINCH SCREW	414638		
S 905	FOOT LIFT SCREW	414520		
S 906	FOOT LIFT SCREW	544204-001		
S 907	LT CRANK PINCH SCW	414511		
S 908	FACE PLATE SCREW	545174-452		
S 909	NEEDLE SET SCREW	414519		
S 910	CLAMP STUD NUT	541198		
S 911	CLAMP STUD	415292		
S 912	LOOPER HOLD SCREW	414558		
S 913	BASE PLATE SCREW	414508		
S 914	BLOCK ADJ SCREW	414516		
S 915	BLOCK PINCH SCREW	414512		
S 916	FACE PLATE	415014		
S 917	LOOPER THREAD TENSION ASSY COMPLETE	415294	(Assy of S775, S771, S784, S684)	
S 918	FOOT LIFTER LEVER	267613		
S 919	FEED BAR SPRING	203941		
S 920	FOOT LIFTER ARM PINCH SCREW	414509		
S 921	TOP TENSION ASSY	367271		
S 922	LOW TENSION ASSY			

MATP PARTS